

SMARTLOAD DRYER®

Model
DGGX2 US FP

Product Code
96103-B



96103-B

PRODUCTS

Brand	Fisher & Paykel
Voltage	120V 60Hz
Model	DGGX2 US FP
Product Code	96103-B

Fisher & Paykel Appliances

5900 Skylab Road
Huntington Beach
CA 92647
Telephone: 888 936 7872

CONTENTS

TOP DECK AND ELECTRONICS	6
CABINET, DRUM AND INLET DUCT	8
OUTLET DUCT	12
CHASSIS COMPONENTS & MOTOR ASSEMBLY.....	14
SUBDECK ASSEMBLY & DRUM DOOR ASSEMBLY	16
BASE PANEL AND COMPONENTS.....	18
NOTES	21

GUIDE TO USING THIS MANUAL

The model covered by this manual is listed on the front cover.

The information detailed in this manual is subject to change without notice, the latest version is indicated by the reprint date and replaces any earlier editions.

The front cover picture shows the type of product and may not necessarily be an exact image of the models covered by the manual.

Kit Parts

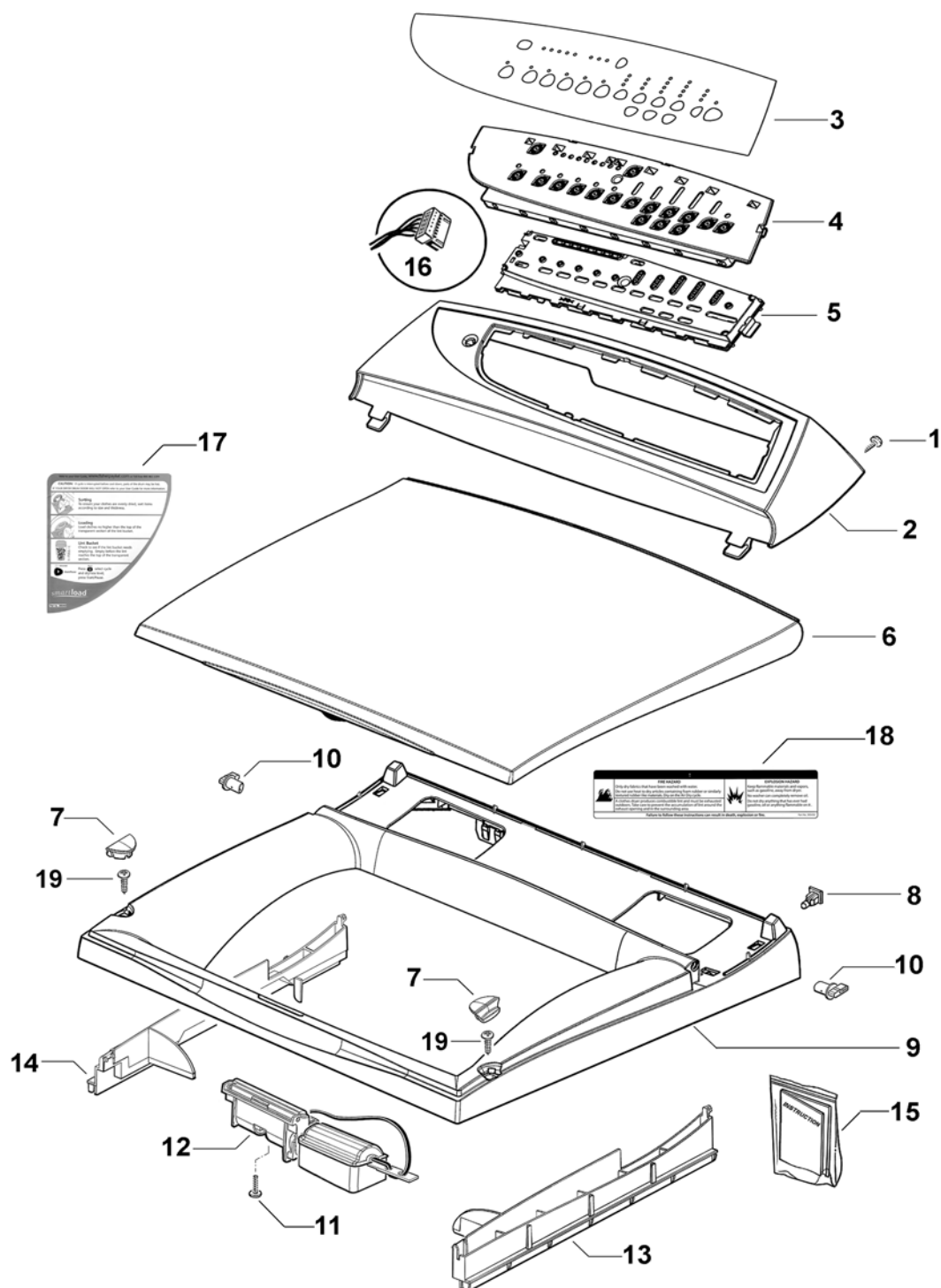
The components shown in *italics with a part number* are those parts in the kit which are available also as separate items. In addition, some parts may be supplied with this kit which are not available as separate items and are therefore either not listed or a part number is not shown against the part description in this manual.

All details relating to Technical Bulletins or Notes are shown on a dedicated page. The Technical Bulletin Number shown relates to the bulletin version which is produced for the Global Service Centres.

Parts List Key

NOT USED	As a part, indicates the diagram part reference is not used in this manual.
<i>italics</i>	Kit components or parts included are shown in <i>italics</i> , refer to above notes: Kit Parts
NI	As a part reference, indicates the part is not illustrated on the diagram.

TOP DECK AND ELECTRONICS

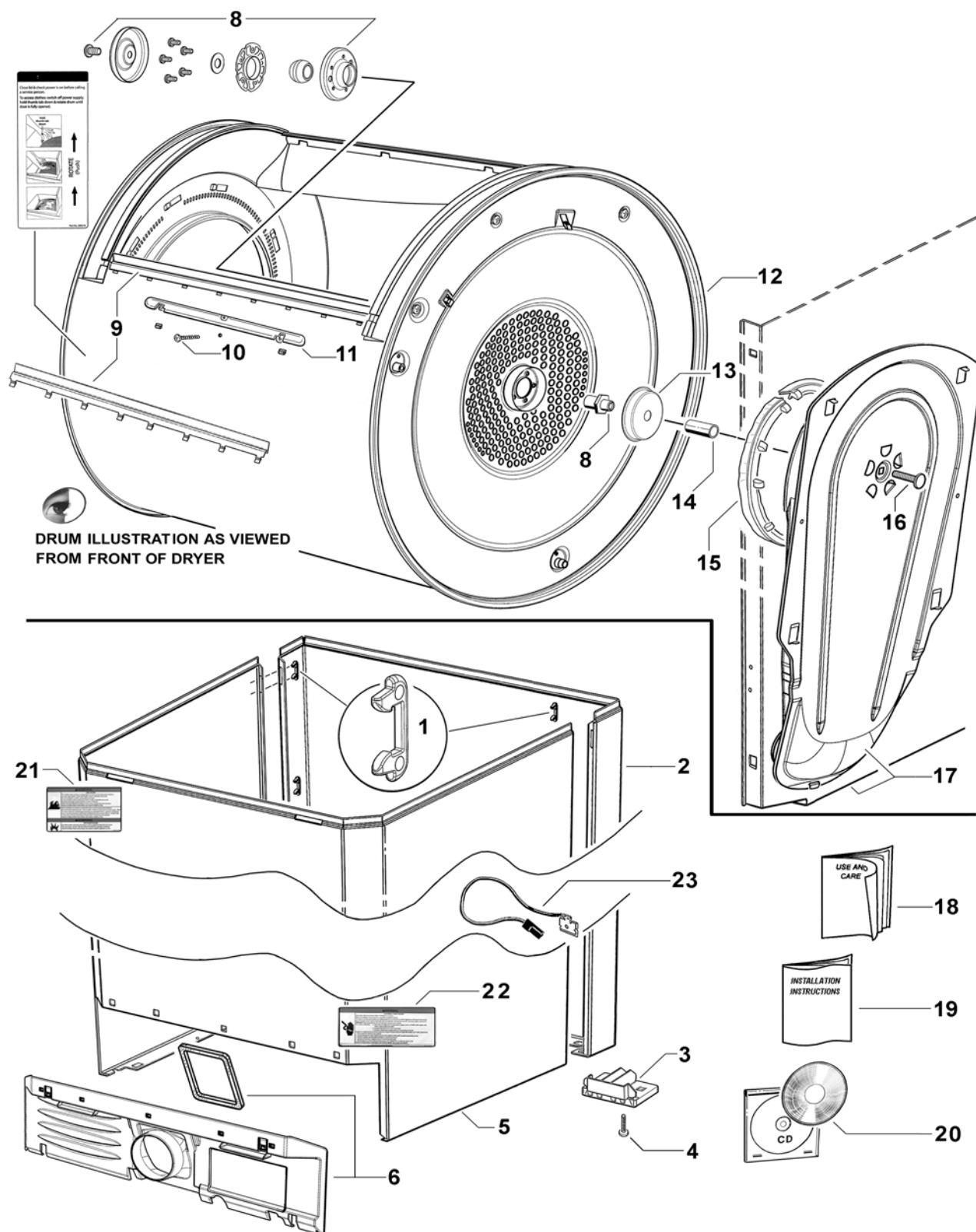


DWG000054

TOP DECK AND ELECTRONICS

REF	PART	DESCRIPTION
1	611933P	SCREW ST 8X5/8 TA MTS PH HS ZNPL (PKT 10)
2	395262	CONSOLE PRINTED DX1
3	395644	PANEL CONTROL DX1 (Silver)
4	426819	INSERT CONSOLE GW11/DX1
5	395124P	DISPLAY DRYER DX1 SERVICE
6	395116P	LID ASSEMBLY DX1
	<i>Includes 395449</i>	<i>LABEL LID USE & CARE</i>
	<i>Includes 395676</i>	<i>LABEL LID USE & CARE G SP</i>
	<i>Includes 395681</i>	<i>LABEL USER WARNING US</i>
	<i>Includes 395636</i>	<i>LABEL LID USE & CARE DEIX1 AA (Supplied but Not Used or Required)</i>
7	395120P	BUFFER LID DX1 (PKT 2)
8	422402	NUT SNAP/SPIRE P0071/05/01/00
9	395118	TOP DECK ASSEMBLY DX1
	<i>Includes 422402</i>	<i>NUT SNAP/SPIRE (2)</i>
	<i>Includes 426825</i>	<i>HINGE LID SD11/DX1 (2)</i>
	<i>Includes 395440</i>	<i>BRACKET T OP DECK INLET DX1</i>
	<i>Includes 395441</i>	<i>BRACKET T OP DECK OUTLET DX1</i>
10	426825P	HINGE LID SD11/DX1 (PKT2)
11	611808P	SCREW ST 8X1/2 T25 PAN PH SS 430S (PKT 10)
12	395498	LIDLOCK & HARNESS ASSY DX1
13	395440	BRACKET T OP DECK INLET DX1
14	395441	BRACKET T OP DECK OUTLET DX1
15	395623	LEAFLET SERVICE SUMMARY DX1 US / CANADIAN
16		HARNESS DISPLAY MODULE – Part of Lidlock and Harness assy 395498
17	395449	LABEL LID USE & CARE
	395604	LABEL LID USE & CARE FRENCH / CANADIAN
	395676	LABEL LID USE & CARE G SPANISH
18	395681	LABEL USER WARNING US
	395605	LABEL USER WARNING FRENCH / CANADIAN
19	611805P	SCREW ST 8X16 PLASTITE PAN PH (PKT 10)

CABINET, DRUM AND INLET DUCT



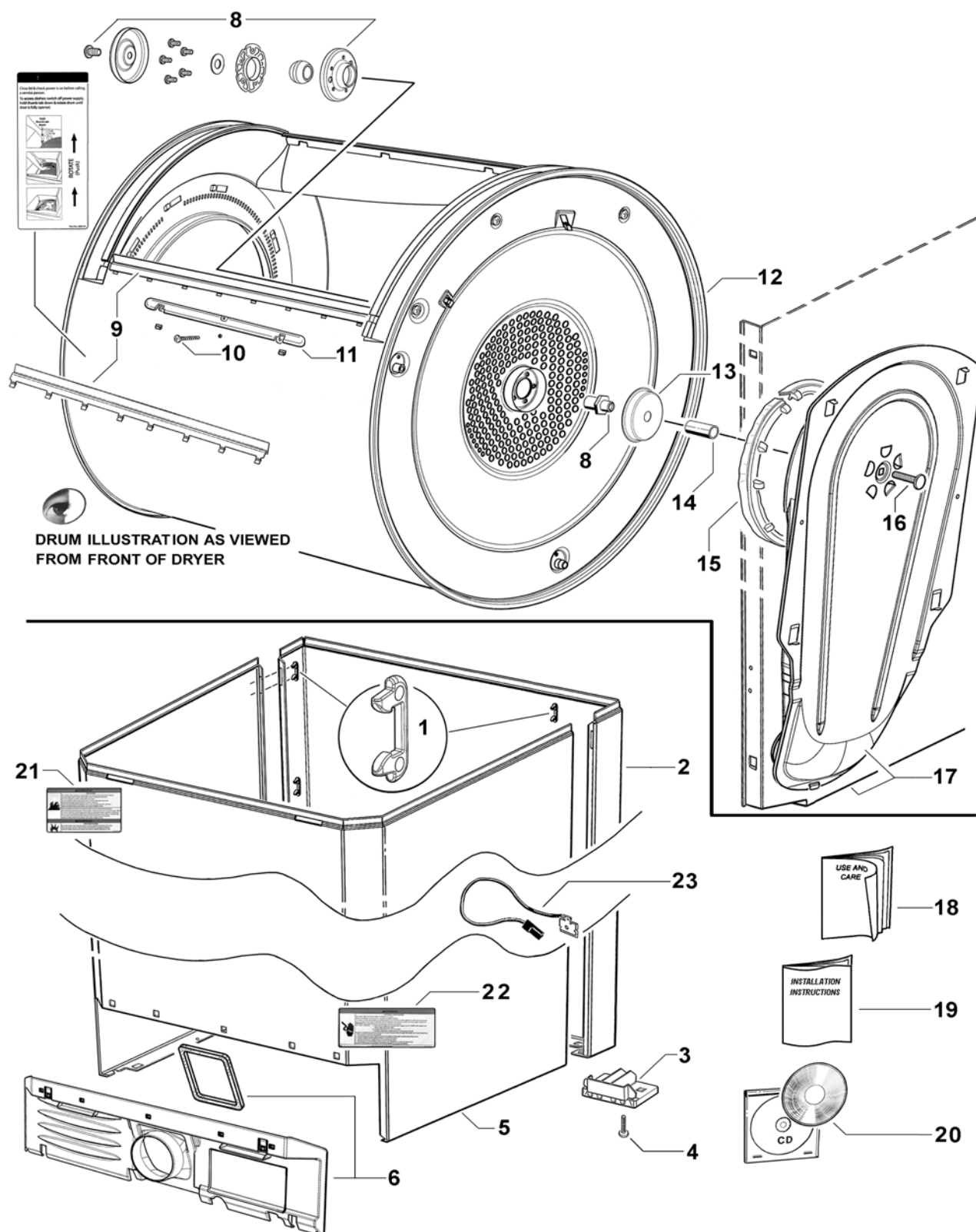
DWG000049

CABINET, DRUM AND INLET DUCT

REF	PART	DESCRIPTION
1	395108P	LOCATOR PANEL (PKT 6)
2	395581P	CABINET FRONT ASSEMBLY DX1
	<i>Includes 395110</i>	<i>BRACKET CABINET FRONT (2)</i>
	<i>Includes 395277</i>	<i>CABLE ASSEMBLY CABINET FRONT EARTH</i>
	<i>Includes 611805</i>	<i>SCREW ST 8X16 PLASTITE PAN ZNPL (2)</i>
3	395110	BRACKET CABINET FRONT
4	611805P	SCREW ST 8X16 PLASTITE PAN PH (PKT10)
5	395598	KIT CABINET ASSEMBLY PKD
	<i>Includes</i>	<i>CABINET FRONT</i>
	<i>Includes</i>	<i>CABINET REAR</i>
	<i>Includes</i>	<i>BRACKET & LEVELLING FOOT (2)</i>
	<i>Includes 395108</i>	<i>LOCATOR PANEL (6)</i>
	<i>Includes 395141</i>	<i>PANEL BASE DX1</i>
	<i>Includes 395415</i>	<i>FOOT SELF ADJUSTING (2)</i>
	<i>Includes 395416</i>	<i>GUIDE FOOT ADJUSTING (2)</i>
	<i>Includes 395417</i>	<i>BRACKET GUIDE FOOT (2)</i>
	<i>Includes 395418</i>	<i>STRAP FOOT ADJUSTING</i>
	<i>Includes 395652</i>	<i>LABEL KIT CABINET REAR</i>
6	395578	GRILLE INTAKE WITH SEAL DX1
	<i>Includes 395653</i>	<i>SEAL FAN OUTLET STRIP</i>
8	479332	KIT BEARING INLET
	<i>Includes</i>	<i>SCREW M8X12 BUTTON SOCKET</i>
	<i>Includes</i>	<i>CAP DRUM INLET</i>
	<i>Includes</i>	<i>SCREW MC M4X12 TAPTITE HEX W ZNPL(5)</i>
	<i>Includes</i>	<i>WASHER THRUST</i>
	<i>Includes</i>	<i>RETAINER BEARING INLET ASSY</i>
	<i>Includes</i>	<i>BEARING DRUM INLET</i>
	<i>Includes</i>	<i>HOUSING BEARING DRUM INLET</i>
	<i>Includes</i>	<i>SHAFT BEARING INLET</i>
	<i>Includes</i>	<i>INSTRUCTION SHEET</i>
9	395374	SCRAPER DOOR DRUM DX1
10	611804P	SCREW TRUSS HD PH SS PLASTITE (PKT 10)
11	395528	BEARING DRUM DOOR
12	395014P	DRUM ASSY DX1
	<i>Includes 395678</i>	<i>LABEL DRUM DOOR</i>
13	395406	SHIELD DUCT INLET
14	395064	SPACER BEARING INLET
15	395458	SEAL DUCT INLET
16	395065	BOLT BEARING INLET

Continued next page

CABINET, DRUM AND INLET DUCT

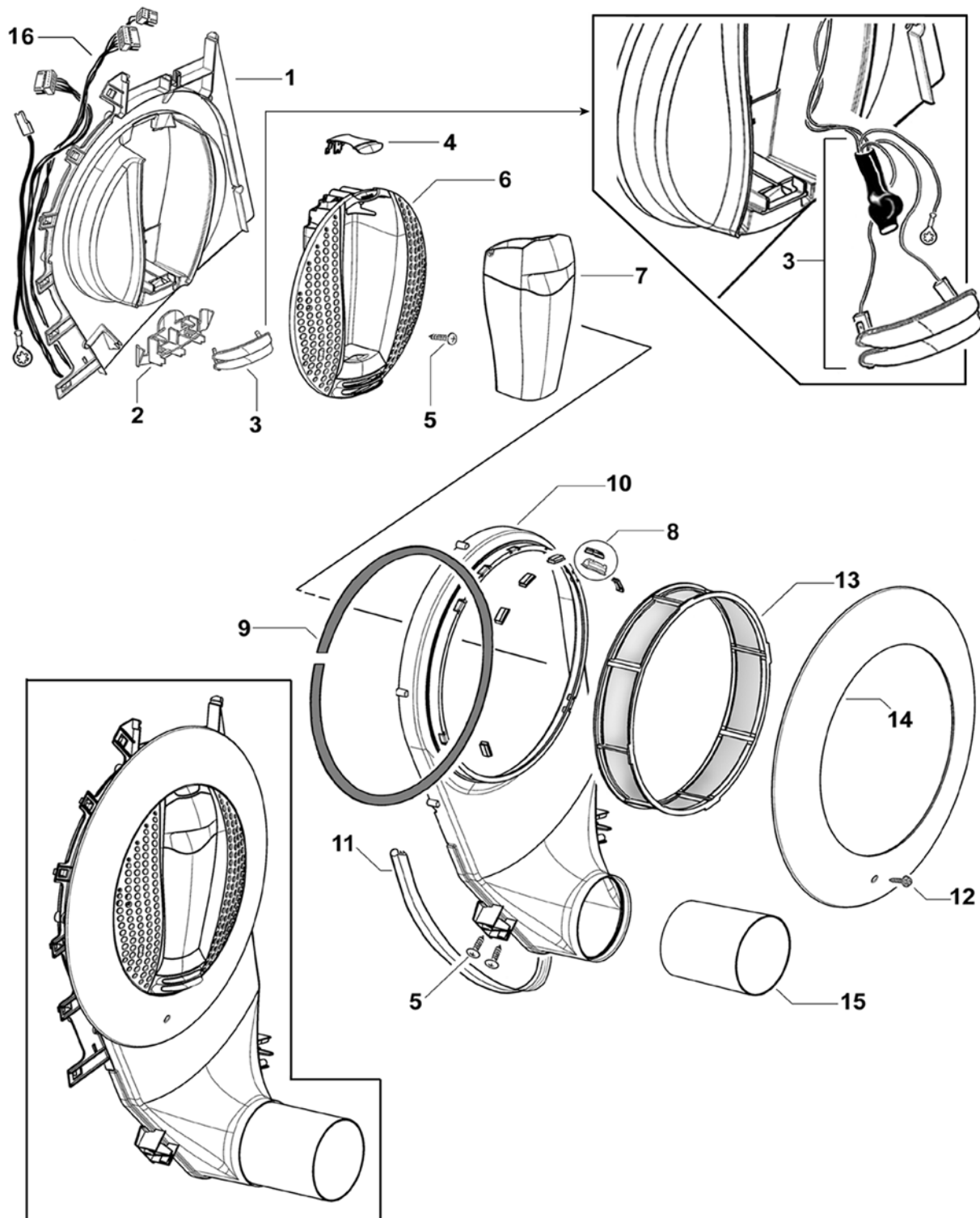


DWG000049

CABINET, DRUM AND INLET DUCT

REF	PART	DESCRIPTION
17	395055P	CHASSIS INLET ASSY DX1
	<i>Includes</i>	<i>PANEL CHASSIS INLET</i>
	<i>Includes</i>	<i>DUCT INLET BACK</i>
	<i>Includes</i>	<i>DUCT INLET FRONT</i>
	<i>Includes</i>	<i>SHAFT BEARING INLET</i>
	<i>Includes 395064</i>	<i>SPACER BEARING INLET</i>
	<i>Includes 395065</i>	<i>BOLT BEARING INLET</i>
	<i>Includes 395406</i>	<i>SHIELD DUCT INLET</i>
	<i>Includes 395458</i>	<i>SEAL DUCT INLET</i>
18	395691	BOOK USE & CARE+INSTALL DX G US (Electric/Gas English/Spanish)
19	395691	BOOK INSTALLATION INST DGGX2 US
	395606	BOOK INSTALL/USE & CARE FRENCH / CANADIAN
	395660	BOOK USER GUIDE DX1 US
20	NOT USED	COMPACT DISC
21	395652	LABEL KIT CABINET REAR
	<i>Includes 395321</i>	<i>LABEL INSTALLER ELECTRICAL (Cabinet Rear)</i>
	<i>Includes 395675</i>	<i>LABEL INSTALLER ELECTRICAL SP (Cabinet Rear)</i>
	<i>Includes 395322</i>	<i>LABEL INSTALLER GAS (Cabinet Rear)</i>
	<i>Includes 395672</i>	<i>LABEL INSTALLER GAS SP (Cabinet Rear)</i>
	<i>Includes 395682</i>	<i>LABEL INSTALLER WARNING ENG+SP (Cabinet Rear)</i>
	<i>Includes 395651</i>	<i>INSTRUCTION SHEET</i>
	395602	LABEL INSTALLER ELECTRICAL FRENCH / CANADIAN
22	395601	LABEL INSTALLER GAS FRENCH / CANADIAN
	395603	LABEL INSTALLER WARNING FRENCH / CANADIAN
23	395277	CABLE ASSEMBLY CABINET FRONT EARTH
<u>PACKAGING MATERIAL NOT ILLUSTRATED</u>		
	395715	CARTON DX1 SMARTPAC
	395363	PACKER DRUM DX1
	395207	PACKER BASE DX1 VAC FORMED

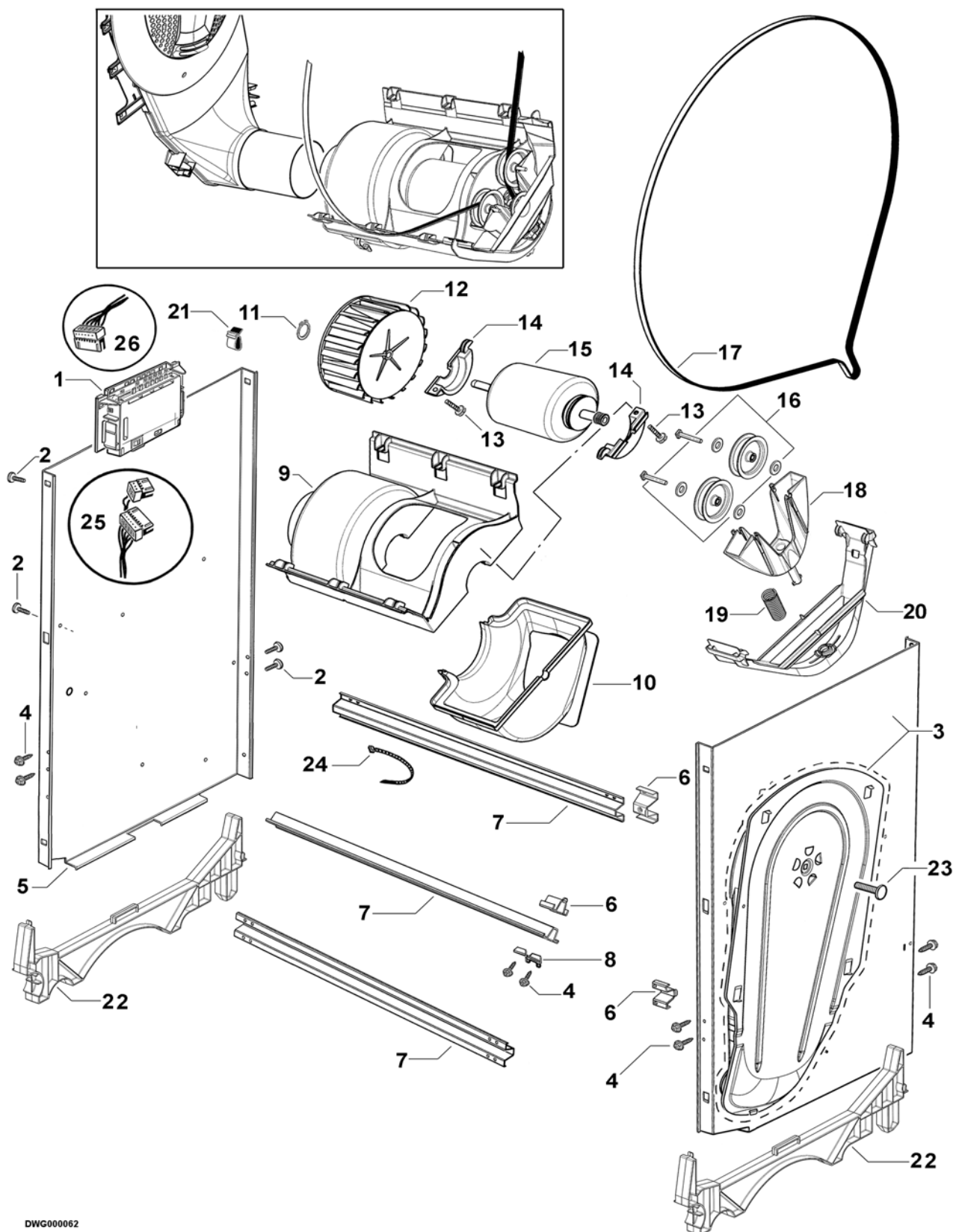
OUTLET DUCT



OUTLET DUCT

REF	PART	DESCRIPTION
1	395005	BRACKET HOUSING COLLECTOR
2	395404	BRACKET CONTACT CONDUCTIVITY
3	395424P	CONTACT CONDUCTIVITY(PKT 2)
	<i>Includes 395143</i>	<i>HARNESS CONDUCTIVITY CONTACTS</i>
4	395138	SCRAPER LINT
5	611805P	SCREW ST 8X16 PLASTITE PAN PH (PKT 10)
6	395136	HOUSING COLLECTOR LINT
7	395249	COLLECTOR LINT ASSY
8	395560P	BEARING ASSY DRUM OUTLET DX1 (PKT 7)
9	395432	SEAL DUCT OUTLET
10	395074	DUCT OUTLET DX1 ASSY
	<i>Includes 395432</i>	<i>SEAL DUCT OUTLET</i>
	<i>Includes 395560</i>	<i>BEARING ASSY (7)</i>
11	395478	GASKET DUCT
12	610213P	SCREW M4X8 TAPTITE HXW ZNP (PKT 10)
13	395541	FILTER LINT ASSY
	<i>Includes</i>	<i>SEAL FILTER LINT</i>
14	395133	RETAINER FILTER LINT DX1
15	395038	TUBE DX1
16	395381	HARNESS SENSOR MODULE

CHASSIS COMPONENTS & MOTOR ASSEMBLY

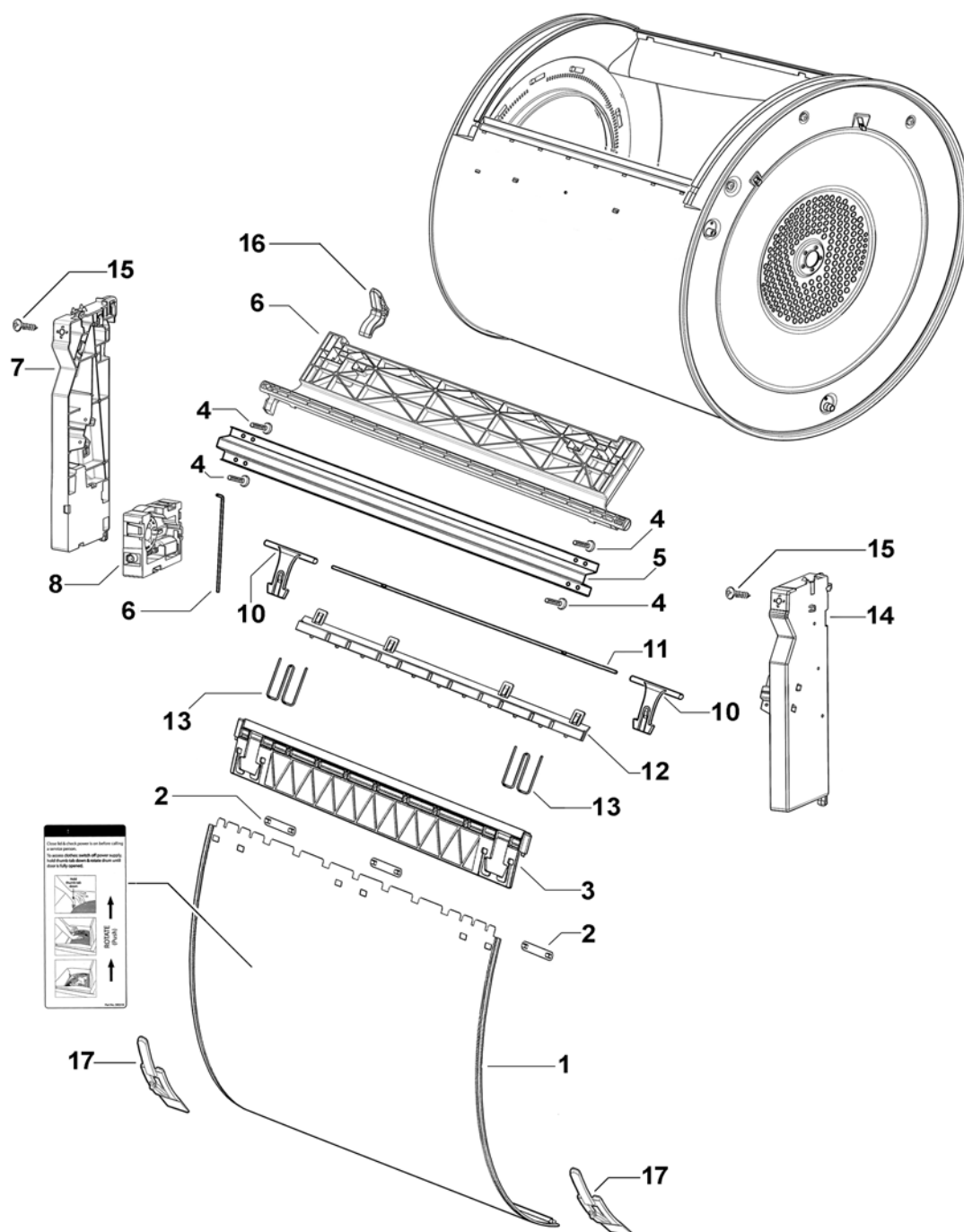


DWG000062

CHASSIS COMPONENTS & MOTOR ASSEMBLY

REF	PART	DESCRIPTION
1	395628P	MODULE SENSOR ASSY
	<i>Includes 395009</i>	<i>LENS POSITION SENSOR</i>
2	611805P	SCREW ST 8X16 PLASTITE PAN PH (PKT 10)
3	395055P	CHASSIS INLET ASSY DX1
	<i>Includes</i>	<i>PANEL CHASSIS INLET</i>
	<i>Includes</i>	<i>DUCT INLET BACK</i>
	<i>Includes</i>	<i>DUCT INLET FRONT</i>
	<i>Includes</i>	<i>SHAFT BEARING INLET</i>
	<i>Includes 395064</i>	<i>SPACER BEARING INLET</i>
	<i>Includes 395065</i>	<i>BOLT BEARING INLET</i>
	<i>Includes 395406</i>	<i>SHIELD DUCT INLET</i>
	<i>Includes 395458</i>	<i>SEAL DUCT INLET</i>
4	610213P	SCREW MC M4X8 TAPTITE HXW ZNP (PKT 10)
5	395079P	PANEL CHASSIS OUTLET DX1
6	395095	BRACKET BEAM
7	395094	BEAM CHASSIS DX1
8	395101	BRACKET BACKING
9	395482	HOUSING MOTOR FAN
10	395037	HOUSING FAN
11	613405	CIRCLIP EXT STD 12MM / DIN471
12	395034	FAN
13	425150P	SCREW 1/4 X 1" PLASTITE 60 (PKT 10)
14	395056P	CLAMP MOTOR MOUNTING (PKT 2)
15	395222P	FAN & MOTOR ASSY 3 PHASE 250W
	<i>Includes 395034</i>	<i>FAN, 613405 CIRCLIP EXT STD 12MM / DIN471</i>
16	395579	KIT JOCKEY PULLEY
	<i>Includes</i>	<i>PIN JOCKEY 6.3DIA X 3.5 X 43 SQ HD (2)</i>
	<i>Includes</i>	<i>WASHER 6.5 X 14 X 1 NYLON (4)</i>
	<i>Includes</i>	<i>PULLEY BELT TENSIONER ASSY (2)</i>
17	395048	BELT DX1
18	395513	YOKE BELT TENSIONER
19	395570	SPRING BELT TENSIONER
20	395250	BRACKET BELT TENSIONER
21	613713	CLIP PIPE UNITED CARR CAC261 PPBK
22	395420	BRACKET PANEL CHASSIS
23	395065	BOLT BEARING INLET
24	621957P	TIE CABLE 102MM UL MS90387-1 (PKT 10)
25	395381	HARNESS SENSOR MODULE
26		HARNESS DISPLAY MODULE – Part of Lidlock and Harness assy

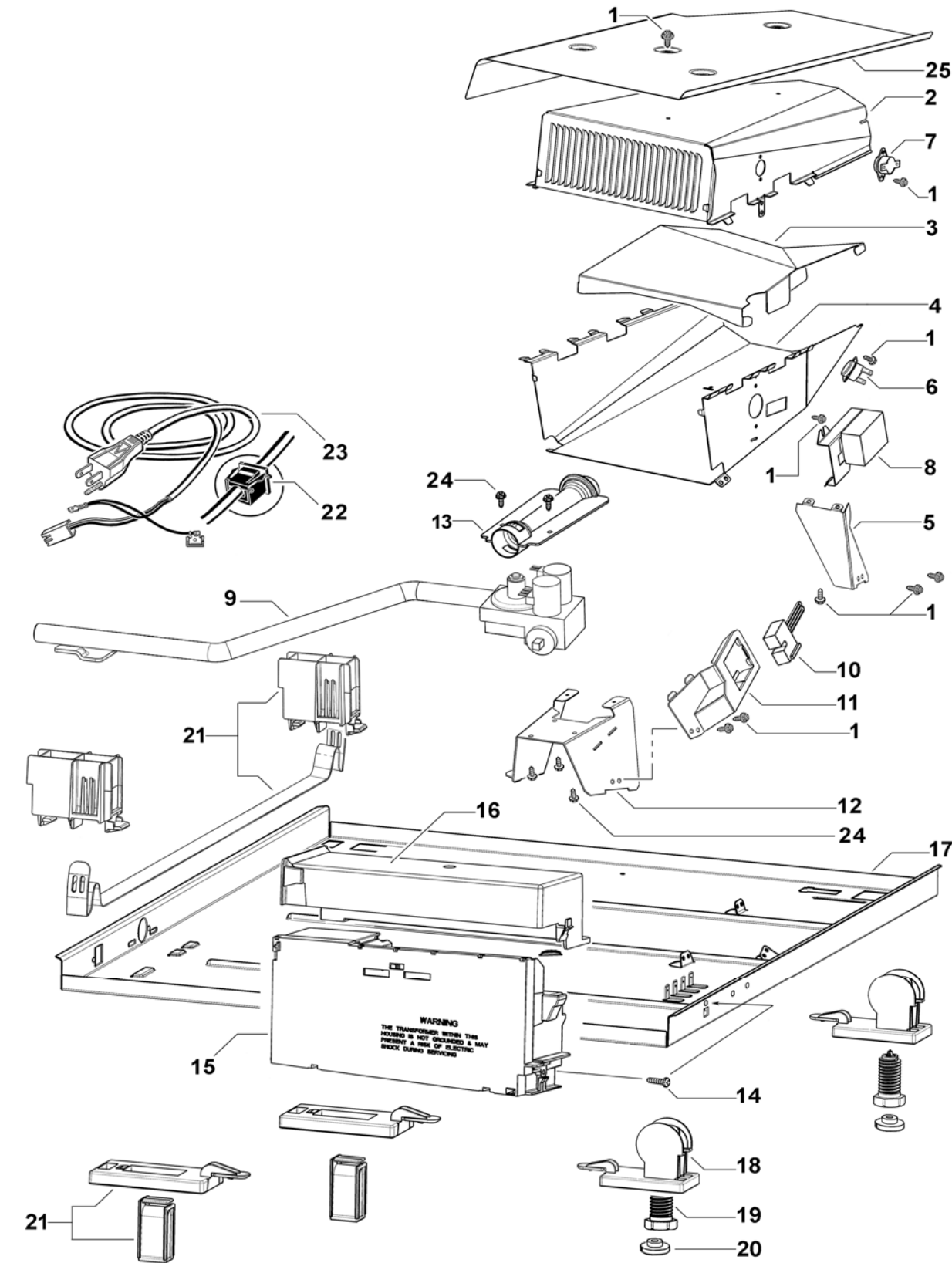
SUBDECK ASSEMBLY & DRUM DOOR ASSEMBLY



SUBDECK ASSEMBLY & DRUM DOOR ASSEMBLY

REF	PART	DESCRIPTION
1	395025P	DOOR DRUM DX1
	<i>Includes 395678</i>	<i>LABEL DOOR DRUM</i>
2	395362P	CLIP BRACKET DOOR (PKT 3)
3	395029	BRACKET DOOR DX1
4	611805P	SCREW ST 8X16 PLASTITE PAN PH (PKT10)
5	395094	BEAM CHASSIS DX1
6	395169P	GRABBER DOOR KIT
	<i>Includes</i>	<i>GRABBER DOOR</i>
	<i>Includes</i>	<i>LINKAGE GRABBER DOOR</i>
7	395159	HOUSING GRABBER OUTLET
8	395693	ACTUATOR ASSY
10	395026	ARM HINGE
11	395027	BAR LOCKING DX1
12	395372	KEY BRACKET DOOR DX1
13	395028P	SPRING HINGE (PKT 2)
14	395158	HOUSING GRABBER INLET
15	611933P	SCREW ST 8X5/8 TA MTS PH HS ZNPL (PKT 10)
16	395521	TAB USER INTERVENTION
17	395526P	BUFFER DOOR DRUM (PKT 2)

BASE PANEL AND COMPONENTS



DWG000110

BASE PANEL AND COMPONENTS

REF	PART	DESCRIPTION
1	610216P	SCREW MC M4X8 TAPTITE PAN ZNP (PKT 10)
2	395355	HOUSING COMBUSTION TOP
3	395368	SHIELD HOUSING COMBUSTION SS 321
4	395351	HOUSING COMBUSTION BOTTOM
5	395228	BRACKET HOUSING HEAT
6	395192	THERMOSTAT AUTO RESET
7	395191	THERMOSTAT MANUAL RESET
8	395194	DETECTOR FLAME GAS
9	395235	BURNER ASSEMBLY
	<i>Includes 395190</i>	<i>PIPE GAS 3/8" MS THREADED</i>
	<i>Includes 395369</i>	<i>VALVE REGULATOR</i>
	<i>Includes 395196</i>	<i>BRACKET BURNER GAS</i>
	<i>Includes 610213</i>	<i>SCREW MC M4X8 TAPTITE HEXW ZNP (3)</i>
	<i>Includes 395187</i>	<i>BURNER VENTURI</i>
10	395188P	IGNITER GAS
11	395365	BRACKET IGNITER
12	395196	BRACKET BURNER GAS
13	395187	BURNER VENTURI
14	611805P	SCREW ST 8X16 PLASTITE PAN PH (PKT10)
15	395627USP	MODULE MC 120V DGX US
16	395542	LID MOTOR CONTROL DX1
17	395141P	PANEL BASE DX1
18	395144	BRACKET FOOT
19	472969P	KIT FOOT & INSERT
	<i>Includes 426153</i>	<i>FOOT LEVELLING</i>
	<i>Includes 426154</i>	<i>INSERT FOOT</i>
20	479183	INSERT FOOT (PKT 4)
21	395576	KIT FOOT SELF ADJUSTING
	<i>Includes 395415</i>	<i>FOOT SELF ADJUSTING (2)</i>
	<i>Includes 395416</i>	<i>GUIDE FOOT ADJUSTING (2)</i>
	<i>Includes 395417</i>	<i>BRACKET GUIDE FOOT (2)</i>
	<i>Includes 395418</i>	<i>STRAP FOOT ADJUSTING DX1</i>
22	395269	CLAMP STRAIN RELIEF CORD SET
23	426699	CORD SET US 120V
24	610213P	SCREW MC M4X8 TAPTITE HEXW ZNP (PKT 10)
25	395527	SHIELD HEATER
NI	395146	HARNESS GAS HEATER & MAINS
	<i>Includes 395191</i>	<i>THERMOSTAT MANUAL RESET</i>
	<i>Includes 395192</i>	<i>THERMOSTAT AUTO RESET</i>
NI	395489	KIT CONVERSION NAT GAS TO LPG
	<i>Includes 395618</i>	<i>ORIFICE LP GAS #55</i>
	<i>Includes 395619</i>	<i>PLUG REGULATOR BLOCK OPEN</i>
	<i>Includes 395589</i>	<i>LEAFLET CONVERSION NG TO LPG</i>
	<i>Includes 395617</i>	<i>LABEL LPG CONVERSION</i>

NOTES