

Parts Manual

Smart Drive® Washer



Model:
WA37T26GW 2 FP CA

Product Code:
96133-A

care

PRODUCT

Brand	Fisher & Paykel
Voltage	110-120V 60Hz
Model	WA37T26GW 2 FP CA
Product Code	96133-A

Fisher & Paykel Appliances Inc
5800 Skylab Rd,
Huntington Beach
California, CA92647
USA
Telephone: 888 936 7872
E-mail:
customer.care@fisherpaykel.com

CONTENTS

TOP DECK AND ELECTRONICS.....	6
WRAPPER AND TRANSIT PACKER	10
AGITATOR AND HOSES.....	12
INNER AND OUTER BOWLS AND PUMP	14
MOTOR.....	18

GUIDE TO USING THIS MANUAL

The model covered by this manual is listed on the front cover.

The information detailed in this manual is subject to change without notice. The latest version is indicated by the reprint date and replaces any earlier editions.

The front cover picture shows the type of product and may not necessarily be an exact image of the model covered by the manual.

Kit Parts

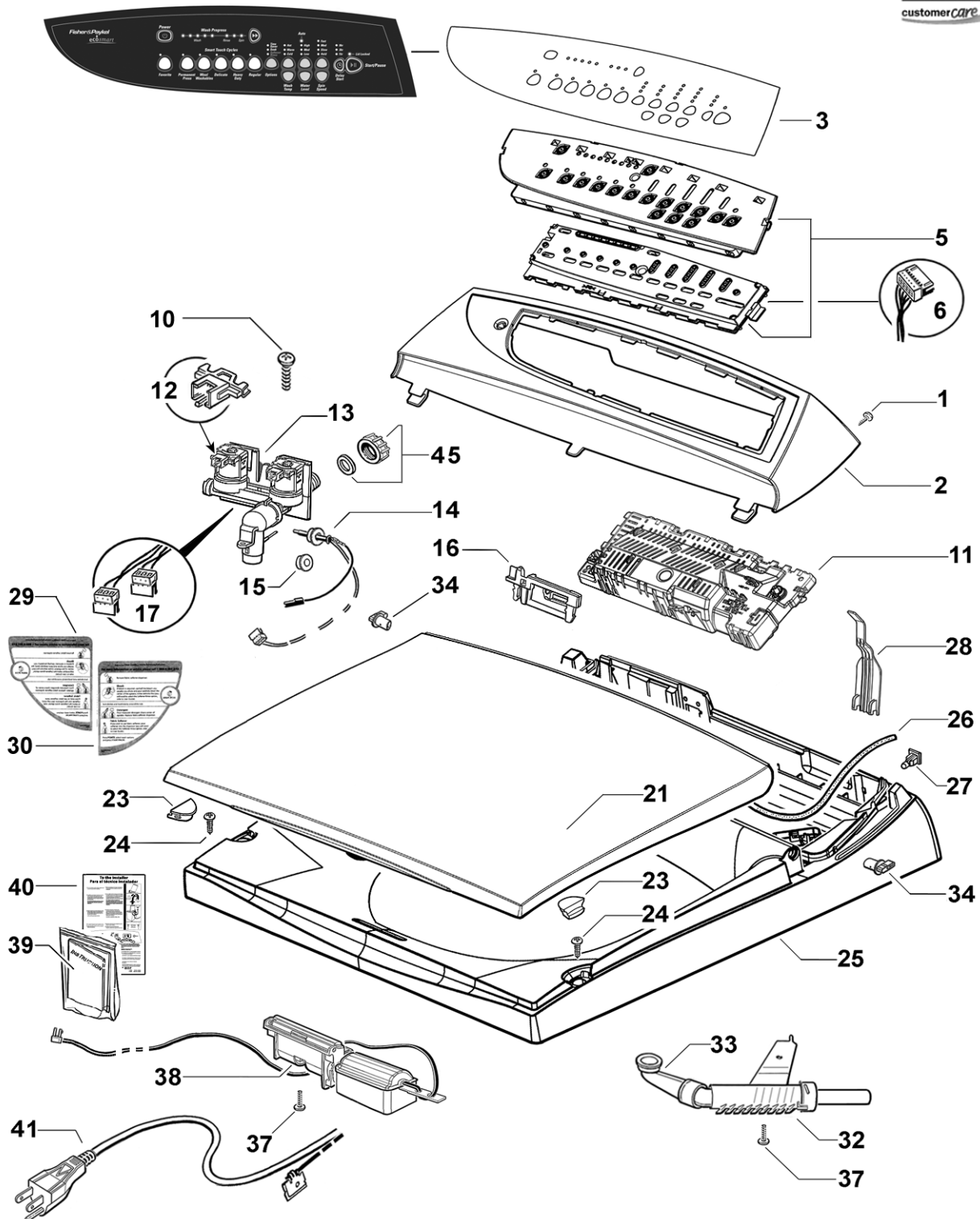
Kit components are shown in *italics*. Where a part number is shown against the descriptions for these kit components, they are also available as separate items. In addition, some parts may be supplied with these kits that are not available as separate items, and are therefore either not listed, or a part number is not shown against the part description in this manual.

Parts List Key

<i>italics</i>	Kit components or parts included are shown in <i>italics</i> . Refer to above notes: Kit Parts.
NI	As a part reference, indicates the part is not illustrated on the diagram.
NOT USED	As a part number, indicates the diagram part reference is not used in this manual.

TOP DECK AND ELECTRONICS

Fishers Paykel
customer CARE



DWG001742

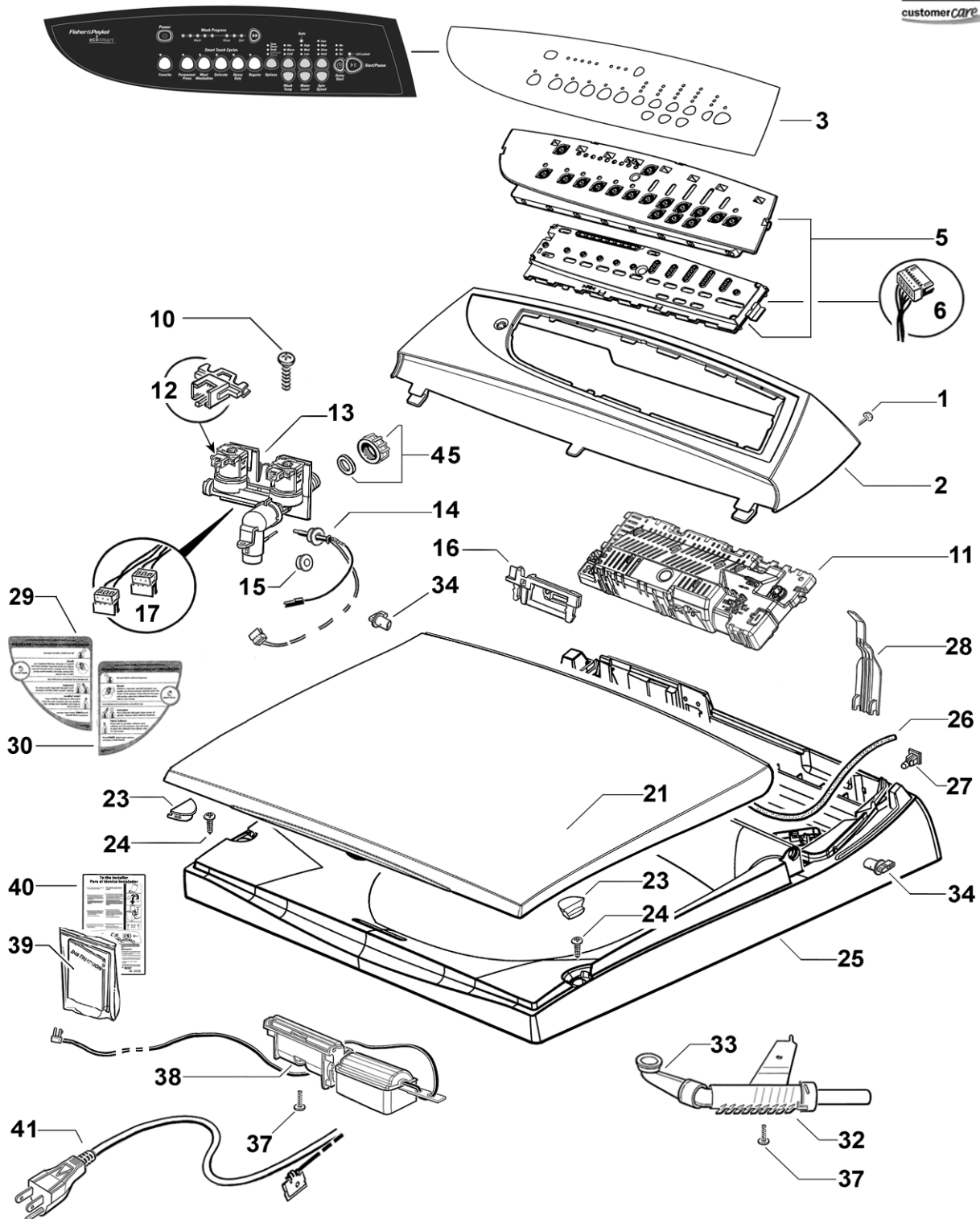
TOP DECK AND ELECTRONICS

REF	PART	DESCRIPTION
1	611933P	SCREW ST 8X5/8 TA MTS PH ZNPL (PKT 10)
2	426815	CONSOLE L11 WH
3	478123	PANEL TOUCH WA37TG BLK
5	421098P	DISPLAY KIT GW PH7 / PH6 SVC
	<i>Includes</i>	<i>DISPLAY ASSY GW</i>
	<i>Includes</i>	<i>INSERT CONSOLE</i>
	<i>Includes</i>	<i>INSTRUCTION SHEET</i>
6	420176	HARNESS DISPLAY GW11
10	611986P	SCREW ST 8X20MM HILO (PKT 10)
11	421306USP	MODULE MC SD H CP E120V USA
12	420897P	CLIP RETAINING RAST DUAL VALVE (PKT 2)
13	421177P	VALVE INLET DUAL US VERSION 3
	<i>Includes 420897</i>	<i>CLIP RETAINING RAST DUAL VALVE (2)</i>
	<i>Includes</i>	<i>THERMISTOR ASSY UL EPCOS</i>
	<i>Includes</i>	<i>GROMMET THERMISTOR 4MM</i>
14	479452P	KIT THERMISTOR UL EPCOS & GROMMET
	<i>Includes</i>	<i>THERMISTOR ASSY UL EPCOS</i>
	<i>Includes</i>	<i>GROMMET THERMISTOR 4MM</i>
	<i>Includes</i>	<i>LEAFLET INSTRUCTION THERMISTOR UL EPCOS</i>
15	479455P	KIT GROMMET THERMISTOR SS
	<i>Includes</i>	<i>GROMMET THERMISTOR 4MM</i>
	<i>Includes</i>	<i>LEAFLET INSTRUCTION GROMMET THERMISTOR</i>
16	420738P	CLAMP HARNESS TOP DECK
17	420593	HARNESS WATER VALVES SD14
21	478070P	LID ASSY WHITE PKD
23	426793P	BUFFER LID SD11 (PKT 2)
24	611812P	SCREW ST 10X5/8 MSH PAN PH SS430 (PKT 10)
25	420762	TOP DECK ASSY IW/GW L WH
	<i>Includes 422402</i>	<i>NUT SNAP IN SPIRE P0071/05/01/00 (2)</i>
	<i>Includes 426825</i>	<i>HINGE LID SD11 (2)</i>
	<i>Includes 420833</i>	<i>NOZZLE SPRAY FILL ASSY</i>
	<i>Includes 425974</i>	<i>ELBOW NOZZLE SD3</i>
	<i>Includes 420738</i>	<i>CLAMP HARNESS TOP DECK</i>
26	426273P	GASKET CONSOLE FOAM CUT
27	422402P	NUT SNAP IN SPIRE P0071/05/01/00
28	420133	COVER WIRING TOPDECK SD11
29	420921	LABEL LID U&C GW-IW (ENG)
30	478117	LABEL LID 120V IW / GW FR
32	420833P	NOZZLE SPRAY FILL ASSY AQUASMART
	<i>Includes</i>	<i>SPRING FILL NOZZLE</i>
	<i>Includes</i>	<i>PISTON NOZZLE SPRAY FILL</i>
	<i>Includes</i>	<i>NOZZLE SPRAY FILL</i>
	<i>Includes</i>	<i>CAP NOZZLE SPRAY FILL</i>

Continued next page

TOP DECK AND ELECTRONICS

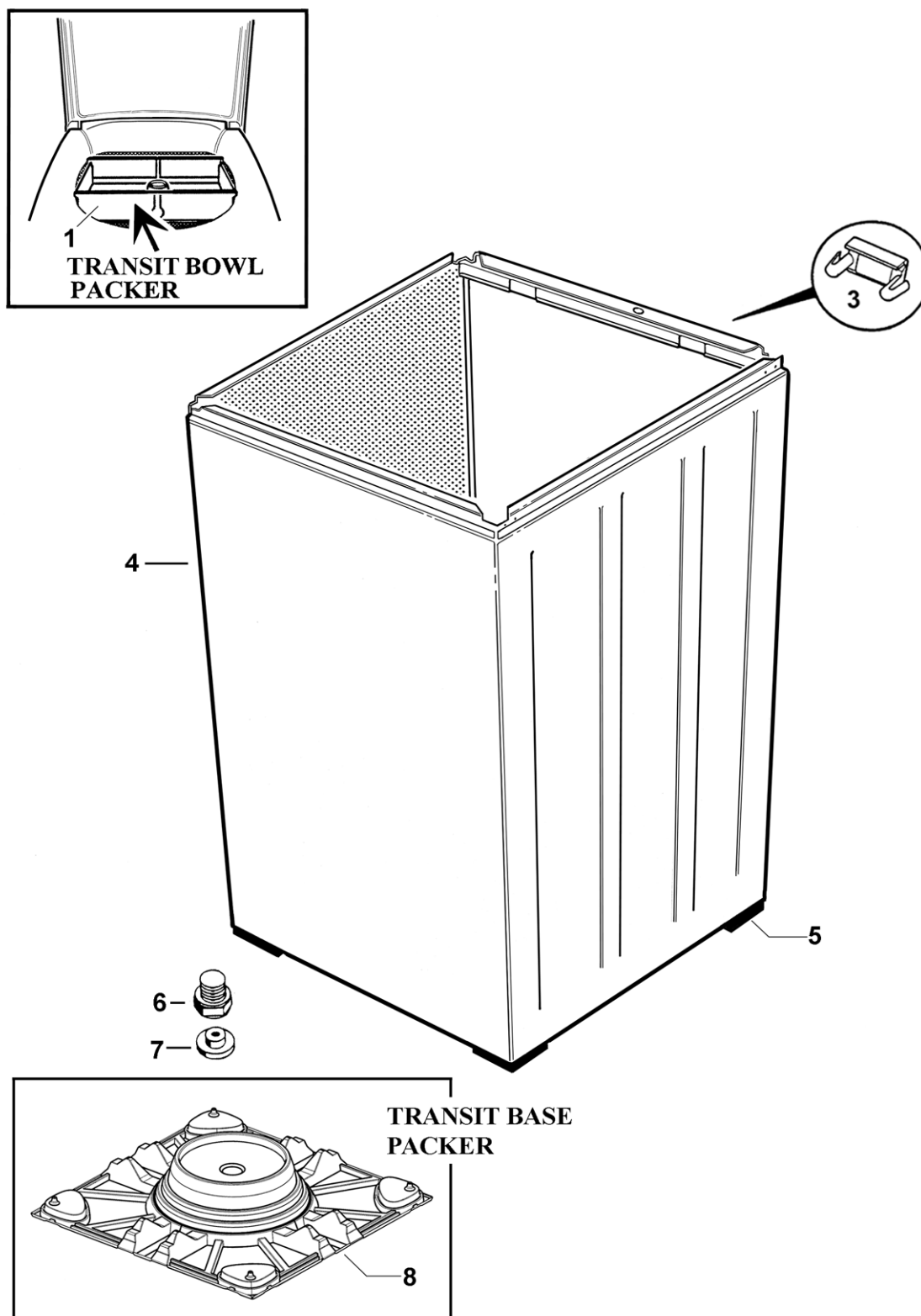
Fishers Paykel
customer CARE



DWG001742

TOP DECK AND ELECTRONICS

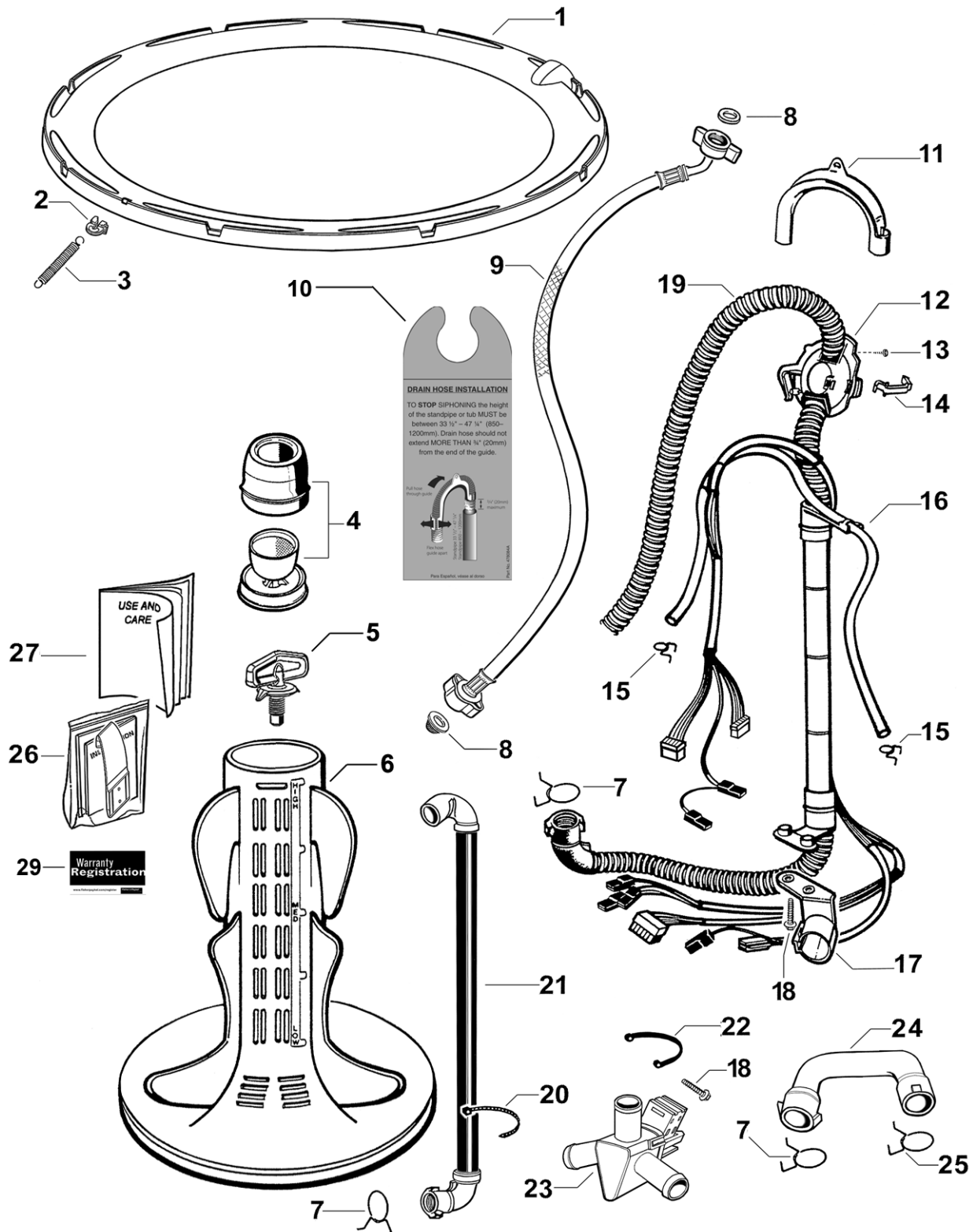
REF	PART	DESCRIPTION
33	425974P	ELBOW NOZZLE SD3
34	426825P	HINGE LID SD11 (PKT 2)
37	611808P	SCREW ST 8X1/2 PAN PH SS 430S (PKT 10)
38	420700P	LIDLOCK ASSY SD14
39	420939	LEAFLET SERVICE SUMMARY GWL15, IWL16
40	420929	LEAFLET INSTALLATION US GW-IW
41	420755	CORD SET SD US STRAIN RELIEF
45	388491P	CAP VALVE BLANKING
	<i>Includes 420017</i>	<i>CONNECTOR SEAL VALVE CAP</i>

WRAPPER AND TRANSIT PACKER

WRAPPER AND TRANSIT PACKER

REF	PART	DESCRIPTION
1	478126	PACKER BOWL AQUASMART
3	426058	COVER EARTH CLIP
4	478169P	WRAPPER CABINET LGE ASSY US PKD
	<i>Includes</i>	<i>CORNER CABINET/ FOOT ASSY (4)</i>
5		PART OF CABINET ASSY
6	472969P	KIT FOOT & INSERT
	<i>Includes</i>	<i>FOOT LEVELLING</i>
	<i>Includes 479183</i>	<i>INSERT FOOT</i>
7	479183	INSERT FOOT (PKT 4)
8	478164	PACKER BASE L VAC FORMED

AGITATOR AND HOSES

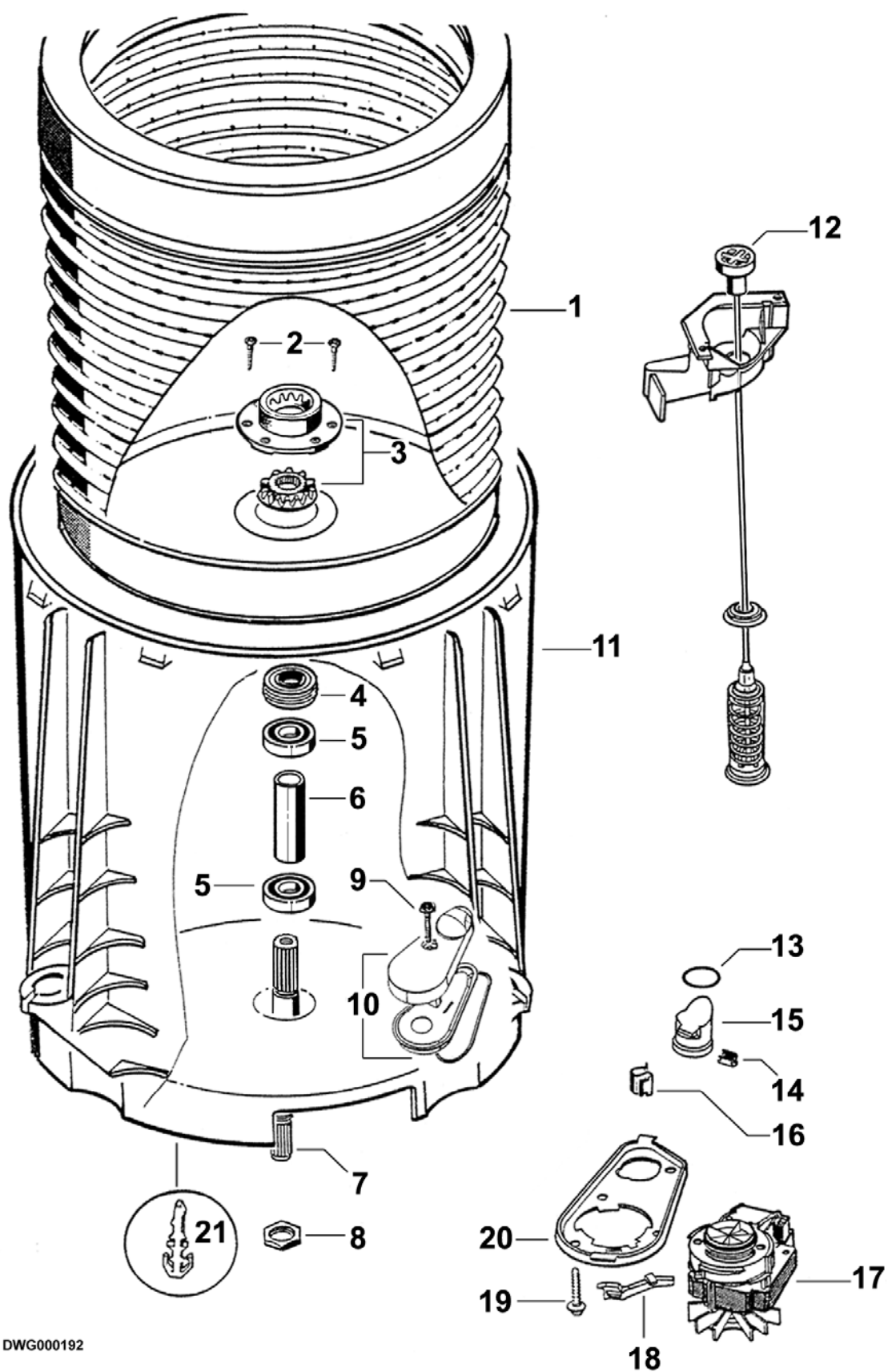


DWG000038

AGITATOR AND HOSES

REF	PART	DESCRIPTION
1	426809P	NECK RING ASSY L11
	<i>Includes</i>	<i>NECK RING L11 LT GREY</i>
	<i>Includes 420197</i>	<i>CLIP BIAS SPRING</i>
	<i>Includes 420122</i>	<i>SPRING BIAS</i>
2	420197P	CLIP BIAS SPRING SD11
3	420122P	SPRING BIAS SD11
4	426993P	DISPENSER ASSY WHITE
5	420665	BOLT AGITATOR
6	478083P	AGITATOR US PKD
7	422500	CLAMP HOSE 031.5
8	420016P	KIT FILTER / CONNECTOR SEAL (2 EACH)
	<i>Includes 420016</i>	<i>FILTER INLET MIFLEX (2)</i>
	<i>Includes 420017</i>	<i>CONNECTOR SEAL MIFLEX (2)</i>
9	420871	HOSE INLET US PLASTIC MIFLEX
10	478084	TAG SIPHON DRAIN HOSE
11	422808P	GUIDE OUTLET HOSE PKD
12	426455	FIXTURE DRAIN HOSE
13	611933P	SCREW ST 8X5/8 TA MTS PH H5 (PKT 10)
14	425487	CLIP FIXTURE DRAIN HOSE
15	425611	CLAMP HOSE 08.5 TALL GRIP
16	425299	TUBE PRESSURE SENSOR SD2
17	425503	BRACKET DRAIN HOSE
18	425150P	SCREW ST 1/4X1" PLASTITE (PKT 10)
19	420822	HOSE & HARNESS ASSY RECIRC
20	621954	TIE T30R 150X3.5 HAMER
21	426863	HOSE RECIRC ASSY SD10
22	426958	CLAMP DIVERTER VALVE
23	426862P	VALVE DIVERTER SD10
	<i>Includes 420301</i>	<i>COVER DIVERTER VALVE</i>
	<i>Includes 420311</i>	<i>LABEL – "Do Not Remove Cover from Valve"</i>
24	426695	HOSE PUMP DIVERTER
25	422503	CLAMP HOSE 028
26	479273	KIT CATCH LID
	<i>Includes 479263</i>	<i>CATCH LID PARTIAL OPENING</i>
	<i>Includes 479278</i>	<i>TAPE FOAM DIE CUT 46X40X1</i>
	<i>Includes 479272</i>	<i>LEAFLET INSTALLATION CATCH LID</i>
27	420900	BOOK USE & CARE GWL15 US-CA
29	479314	CARD WARRANTY REGISTRATION ALL PRODUCT

INNER AND OUTER BOWLS AND PUMP



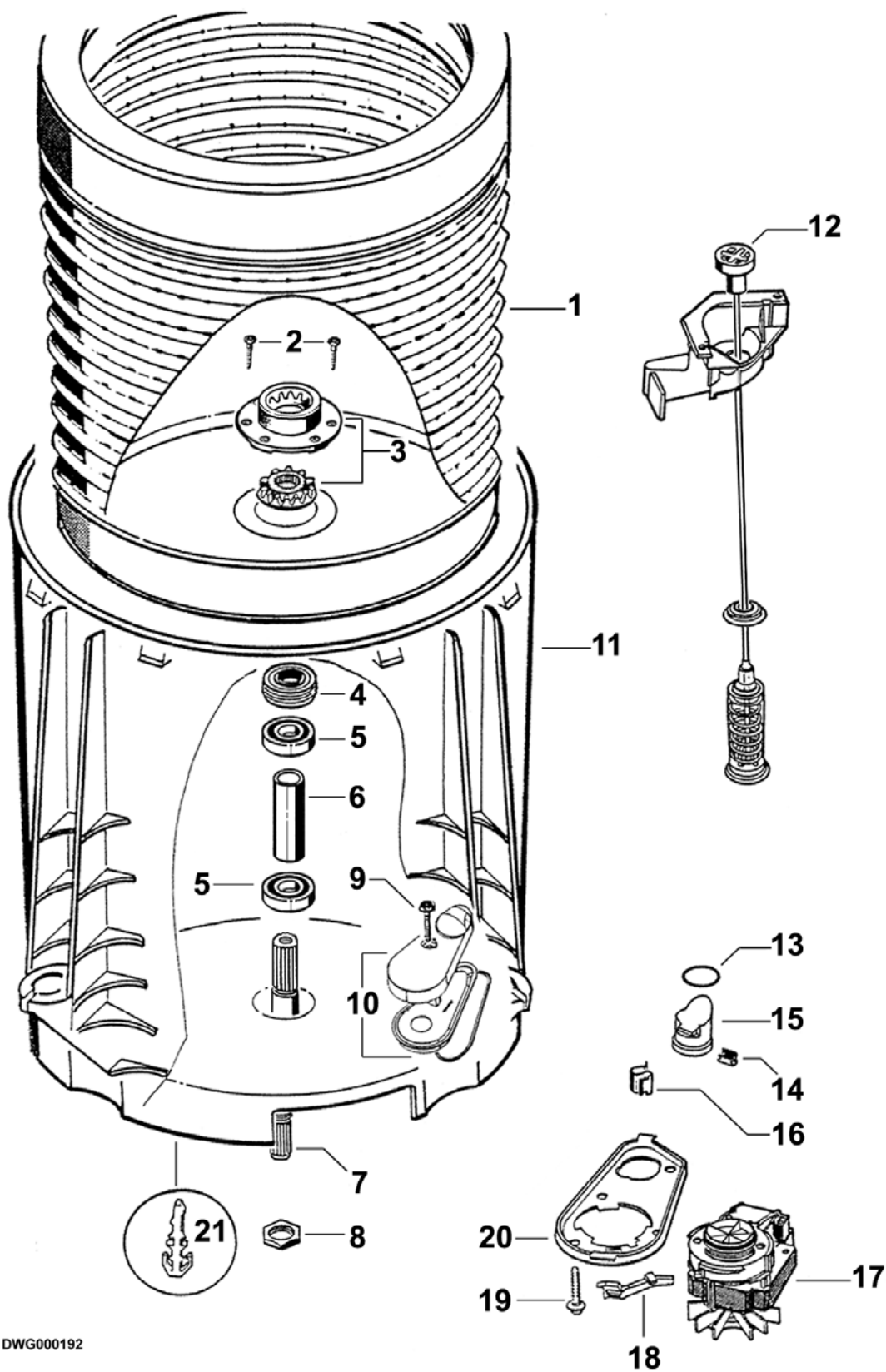
DWG000192

INNER AND OUTER BOWLS AND PUMP

REF	PART	DESCRIPTION
1	420841P	BOWL INNER 700 ASSY PKD
	<i>Includes 425080</i>	<i>SPLINE DRIVEN</i>
	<i>Includes 425131</i>	<i>SCREW CLUTCH (3)</i>
	<i>Includes 425596</i>	<i>SPLINE DRIVE ASSY</i>
2	425131P	SCREW CLUTCH (PKT 10)
3	479318	KIT SPLINE DRIVE
	<i>Includes 425080</i>	<i>SPLINE DRIVEN</i>
	<i>Includes 425596</i>	<i>SPLINE DRIVE ASSY</i>
4	425009P	LIPSEAL PKD
5	425006P	BEARING 60052R SH/C3
6	425007	SPACER BEARING
7	420794P	KIT SHAFT DRIVE SHORTENED PKD
	<i>Includes 420664</i>	<i>BOLT ROTOR</i>
	<i>Includes 420665</i>	<i>BOLT AGITATOR</i>
	<i>Includes 479359</i>	<i>INSTRUCTION SHEET</i>
8	425171	NUT BEARING
9	425162P	SCREW COVER (PKT 10)
10	479188P	KIT DRAIN CAP HOOD & IMPELLOR
	<i>Includes 425115</i>	<i>SEAL PUMP CAP</i>
	<i>Includes 420319</i>	<i>IMPELLOR INSERT ASSY</i>
	<i>Includes 426939</i>	<i>CAP PUMP RIBBED</i>
	<i>Includes 426940</i>	<i>HOOD PUMP</i>
11	421099	BOWL OUTER KIT LARGE (Notch to be cut out for Recirculating Hose)
	<i>Includes 425006</i>	<i>BEARING 6005LLU</i>
	<i>Includes 425007</i>	<i>SPACER BEARING</i>
	<i>Includes 425009</i>	<i>LIP SEAL</i>
	<i>Includes 425115</i>	<i>SEAL PUMP CAP</i>
	<i>Includes 425162</i>	<i>SCREW COVER</i>
	<i>Includes 426939</i>	<i>CAP PUMP RIBBED</i>
	<i>Includes 426940</i>	<i>HOOD PUMP</i>
	<i>Includes 421094</i>	<i>SHIELD MOTOR UL (BLACK)</i>
	<i>Includes 425961</i>	<i>SHIELD MOTOR SD UL (BROWN)</i>
	<i>Includes 426145</i>	<i>TUBE BUFFER SHIELD MOTOR UL (4)</i>
	<i>Includes</i>	<i>SHEET INSTALLATION INSTRUCTION</i>
12	426750P	SUSPENSION ASSY SQUASHED (PKT 4)
13	425149	SEAL O RING PRESSURE CHAMBER
14	613710P	CLIP EDGE (PKT 2)
15	425763	PLUG ASSY PRESSURE CHAMBER
	<i>Includes 425097</i>	<i>PLUG PRESSURE CHAMBER</i>
	<i>Includes 425149</i>	<i>SEAL O RING PRESSURE CHAMBER</i>

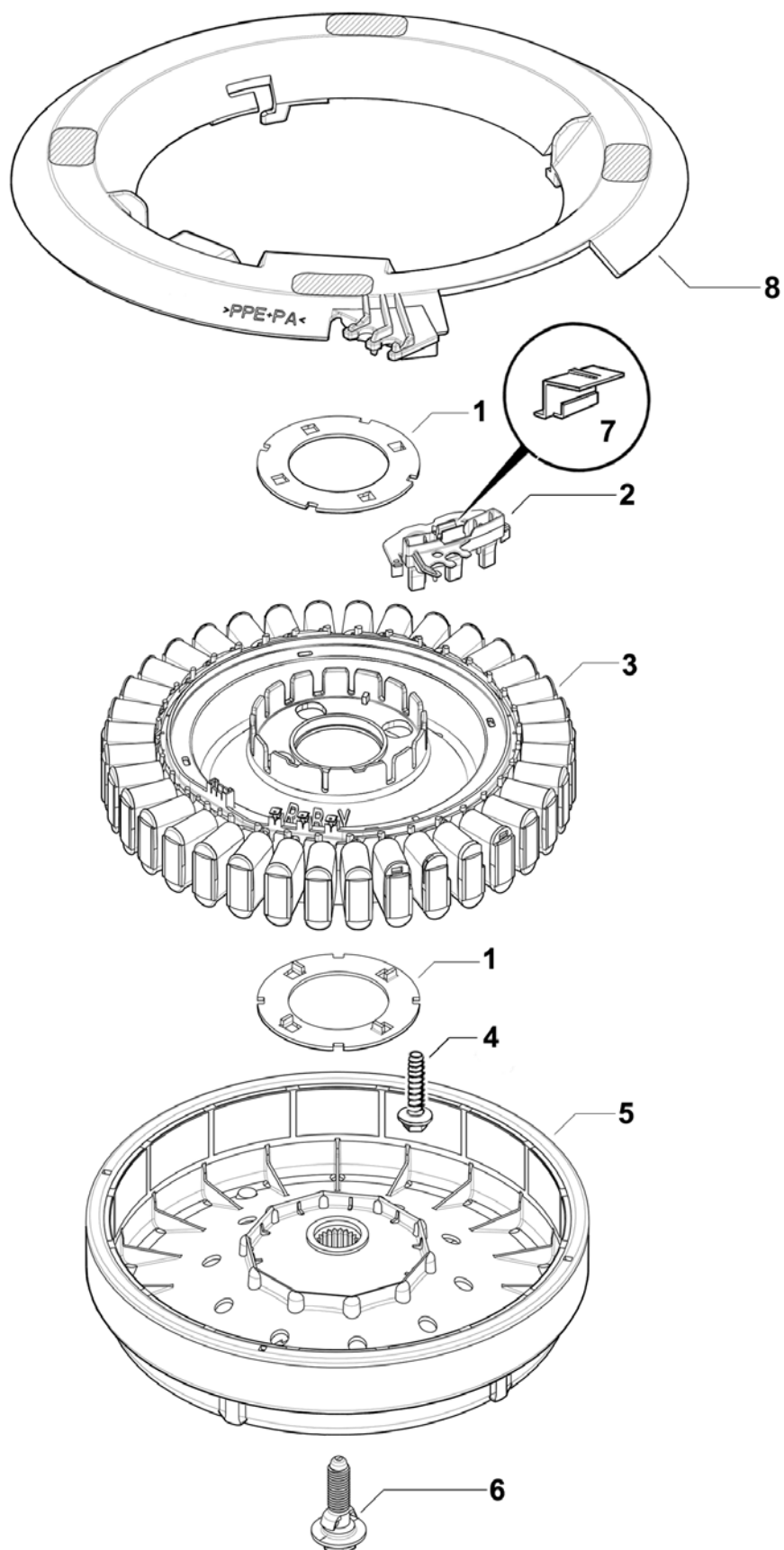
Continued next page

INNER AND OUTER BOWLS AND PUMP



INNER AND OUTER BOWLS AND PUMP

REF	PART	DESCRIPTION
16	613709P	CLIP PIPE UNITED CARR FT19280-ZNPL (PKT 10)
17	420325P	PUMP DRAIN 110V 60Hz
	<i>Includes 420319</i>	<i>IMPELLOR INSERT ASSEMBLY</i>
18	425128	CLIP PUMP RETAINING
19	425150P	SCREW ST 1/4X1" PLASTITE (PKT 10)
20	425028	BRACKET PUMP
21	472867P	CLIP WIRING OUTER BOWL (PKT 3)

MOTOR

DWG000992

MOTOR

REF	PART	DESCRIPTION
1	426174P	CLAMP PLATE STATOR LANCED (PAIR)
2	420776P	RPS SD PH7 SPARES
	<i>Includes 420773</i>	<i>COVER TERMINAL RAST</i>
3	420775P	STATOR ASSEMBLY PKD
4	426835P	SCREW STATOR (PKT 10)
5	420774P	ROTOR ASSEMBLY PKD
	<i>Includes 420664</i>	<i>BOLT ROTOR</i>
6	420664P	BOLT ROTOR
7	420773	COVER TERMINAL RAST
8	421094P	SHIELD MOTOR UL SD14 PKD