

# Parts Manual

## AquaSmart® Washer

**Model:**  
WL37T26CW 2 FP CA

**Product Code:**  
96159-A



care



## PRODUCT

<b>Brand</b>	Fisher & Paykel
<b>Voltage</b>	110-120V 60Hz
<b>Model</b>	WL37T26CW 2 FP CA
<b>Product Code</b>	96159-A

**Fisher & Paykel Appliances**

5900 Skylab Road  
Huntington Beach  
CA 92647

Telephone: 888 936 7872



## CONTENTS

TOP DECK AND ELECTRONICS .....	6
WRAPPER CABINET .....	10
AGITATOR AND HOSES .....	12
INNER & OUTER BOWLS AND DRAIN PUMP .....	14
MOTOR .....	16

### GUIDE TO USING THIS MANUAL

The model covered by this manual is listed on the front cover.

The information detailed in this manual is subject to change without notice. The latest version is indicated by the reprint date and replaces any earlier editions.

The front cover picture shows the type of product and may not necessarily be an exact image of the model covered by the manual.

### Kit Parts

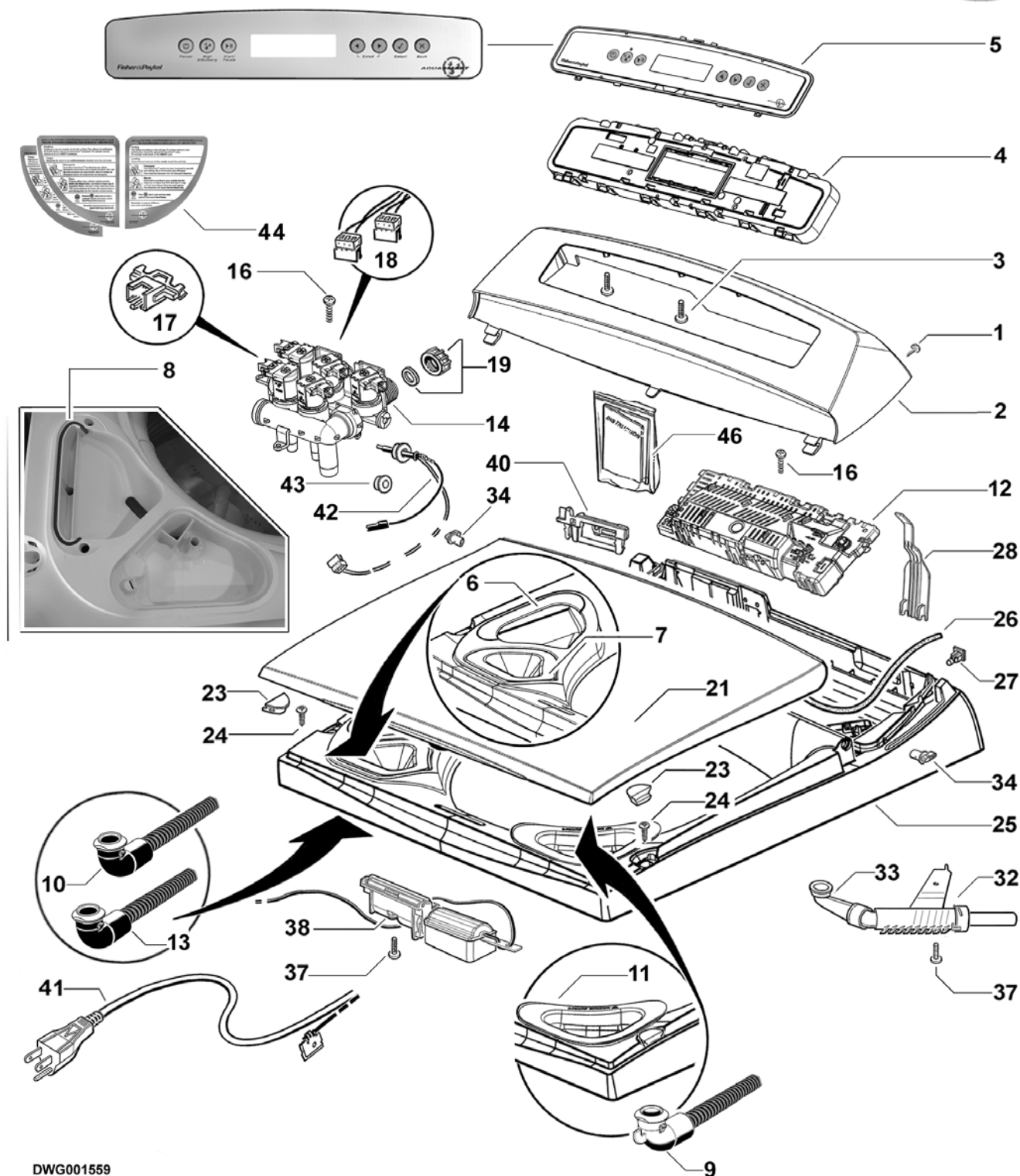
Kit components are shown in *italics*. Where a part number is shown against the descriptions for these kit components, they are also available as separate items. In addition, some parts may be supplied with these kits that are not available as separate items, and are therefore either not listed, or a part number is not shown against the part description in this manual.

### Parts List Key

<i>italics</i>	Kit components or parts included are shown in <i>italics</i> . Refer to above notes: Kit Parts.
NI	As a part reference, indicates the part is not illustrated on the diagram.
NOT USED	As a part number, indicates the diagram part reference is not used in this manual.

# TOP DECK AND ELECTRONICS

Fishers/Paykel  
customer CARE



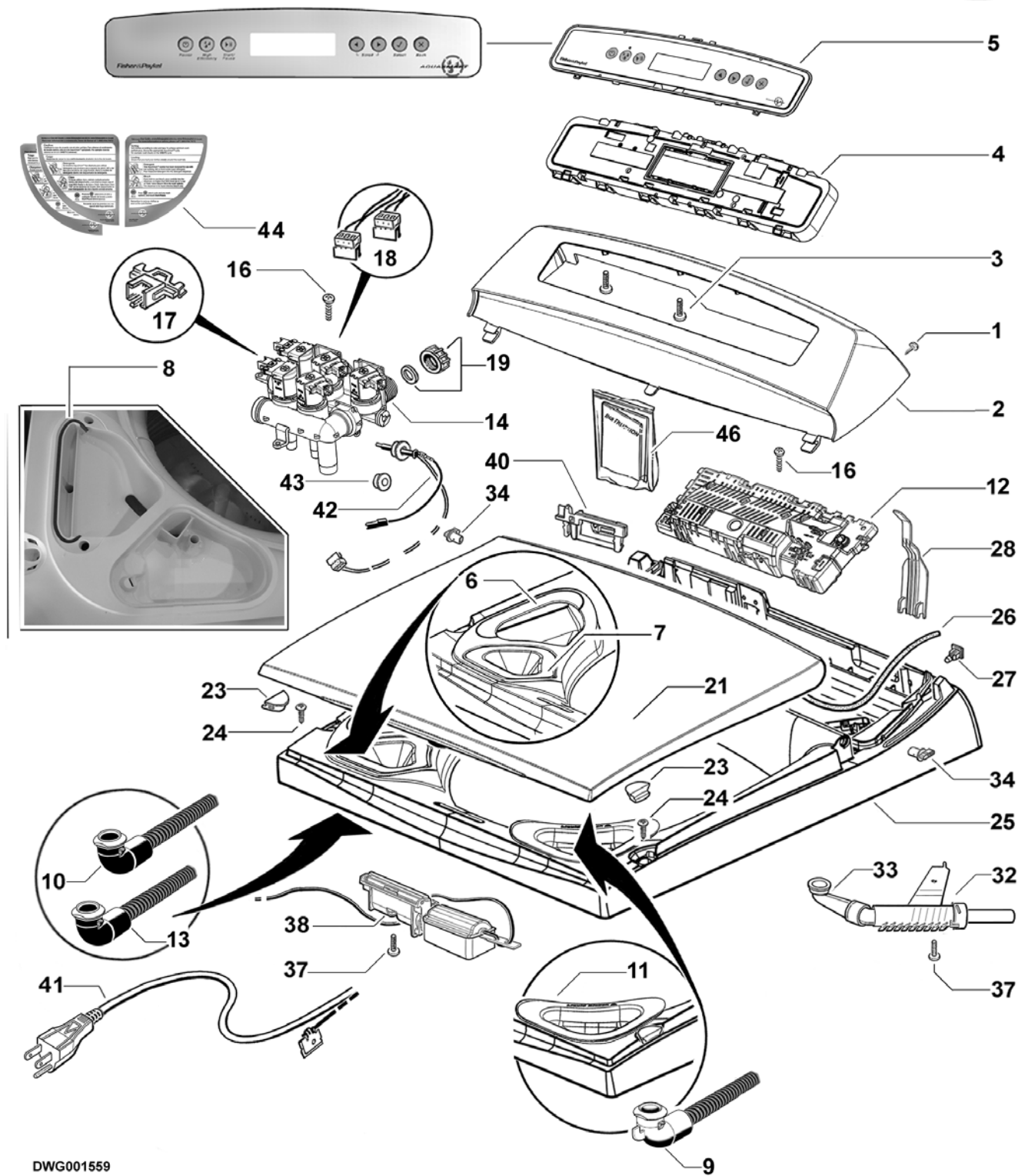
DWG001559

## TOP DECK AND ELECTRONICS

REF	PART	DESCRIPTION
1	611933P	SCREW ST 8X5/8 TA MTS PH ZNPL (PKT 10)
2	420957	CONSOLE L SD IMD
3	611805P	SCREW ST 8X16 PLASTITE PAN PH (PKT 10)
4	421231P	MODULE DISPLAY AQS H LCD BLH SVC
5	421075P	FACIA IMD ASSY 120V
	<i>Includes</i>	<i>PROTECTIVE LABEL</i>
6	421047	COVER DETERGENT FLUSHER KIT
	<i>Includes</i>	<i>GASKET DISPENSER DIA 3.0MM</i>
7	420912	FUNNEL FABRIC SOFTENER
8	421047	COVER DETERGENT FLUSHER KIT
	<i>Includes</i>	<i>GASKET DISPENSER DIA 3.0MM</i>
9	478149	HOSE DISPENSING BLEACH
10	421015P	HOSE DISP DETERGENT CREAM PKD
11	478150	FUNNEL BLH 3 UNIT DISPENSING
12	421226USP	MODULE MC AQS H 3UD 120V USA
13	420938P	HOSE DISPENSER GREY
14	478152	VALVES INLET 3 UNIT DISPENSING US
	<i>Includes</i>	<i>CLIP RETAINING RAST CONNECTOR WHITE (2)</i>
	<i>Includes</i>	<i>CLIP RETAINING RAST CONNECTOR YELLOW (1)</i>
	<i>Includes</i>	<i>CLIP RETAINING RAST CONNECTOR PURPLE (1)</i>
	<i>Includes</i>	<i>CLIP RETAINING RAST CONNECTOR RED (1)</i>
	<i>Includes</i>	<i>THERMISTOR ASSY EPCOS UL</i>
	<i>Includes</i>	<i>GROMMET 4MM THERMISTOR</i>
16	611986P	SCREW ST 8X20MM HILO PAN PH
17	421049P	CLIP KIT RAST VALVE DISPENSING
	<i>Includes</i>	<i>CLIP RETAINING RAST CONNECTOR WHITE (2)</i>
	<i>Includes</i>	<i>CLIP RETAINING RAST CONNECTOR YELLOW (1)</i>
	<i>Includes</i>	<i>CLIP RETAINING RAST CONNECTOR PURPLE (1)</i>
	<i>Includes</i>	<i>CLIP RETAINING RAST CONNECTOR RED (1)</i>
	<i>Includes</i>	<i>LEAFLET INSTRUCTION</i>
18	421228	HARNESS DISPENSING INLET 5 VALVES
19	388491P	CAP VALVE BLANKING
	<i>Includes 420017</i>	<i>CONNECTOR SEAL VALVE CAP</i>
21	478070P	LID L13 WHITE PKD
23	426793P	BUFFER LID SD11 (PKT 2)
24	611812P	SCREW ST 10X5/8 MSH PAN PH SS430 (PKT 10)

Continued next page

## TOP DECK AND ELECTRONICS



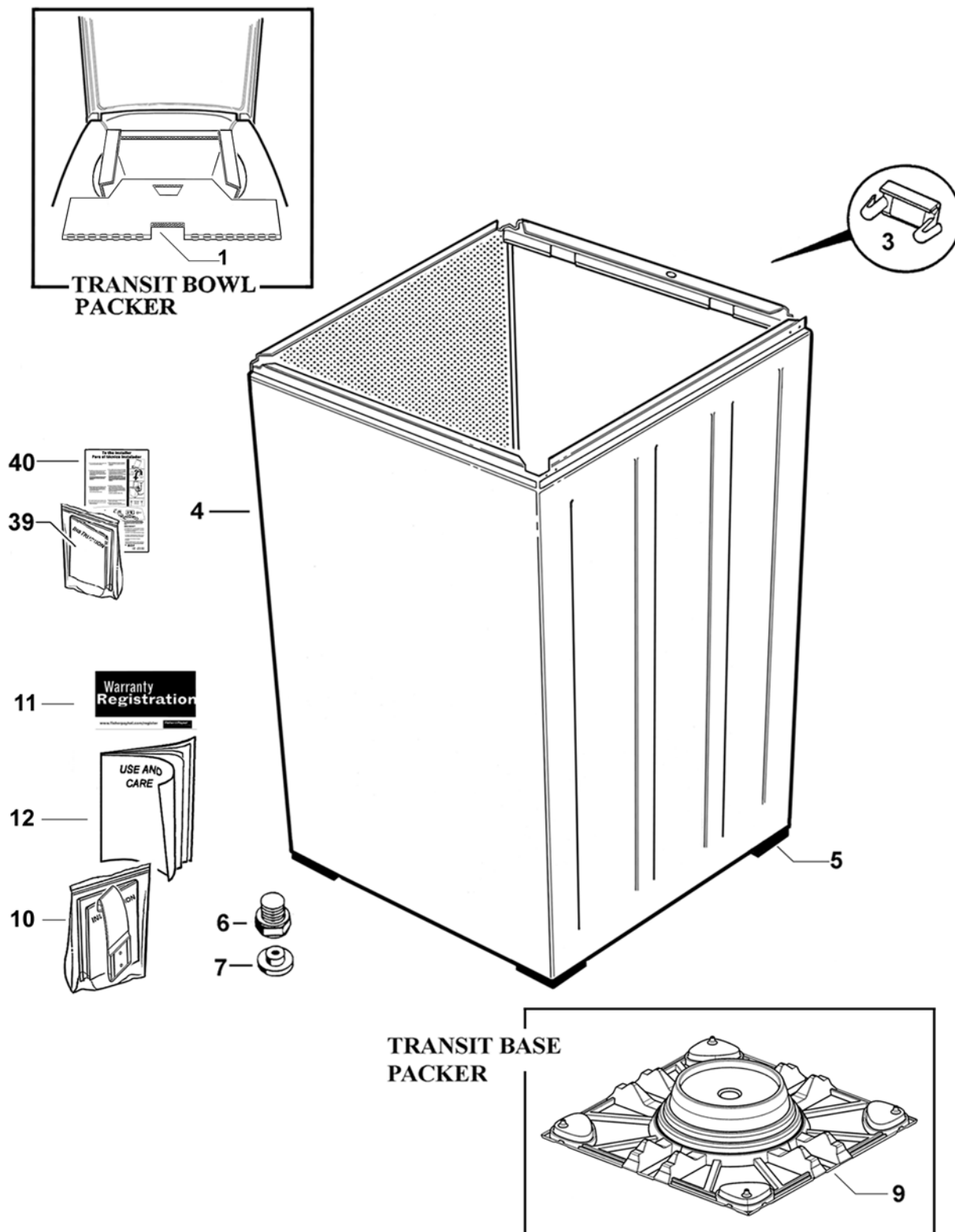
DWG001559



## TOP DECK AND ELECTRONICS

REF	PART	DESCRIPTION
25	478147	TOP DECK 3 UNIT DISPENSING LARGE ASSY
	<i>Includes</i>	TOP DECK 3 UNIT DISPENSING
	<i>Includes</i>	COVER DETERGENT FLUSHER
	<i>Includes</i>	GASKET DISPENSER DIA 3.0MM
	<i>Includes</i> 420738	CLAMP HARNESS TOP DECK
	<i>Includes</i> 421004	BUNG DISPENSER TOP DECK (2)
	<i>Includes</i> 422402	NUT SNAP IN SPIRE P0071/05/01/00 (2)
	<i>Includes</i> 426825	HINGE LID SD11 (2)
	<i>Includes</i> 478150	FUNNEL 3 UNIT DISPENSING
	<i>Includes</i> 420938	HOSE DISP. SOFTENER GREY
	<i>Includes</i> 421015	HOSE DISP. DETERGENT CREAM
	<i>Includes</i> 420912	FUNNEL FABRIC SOFTENER
	<i>Includes</i> 478149	HOSE DISPENSING BLEACH
26	426273	GASKET CONSOLE FOAM CUT
27	422402P	NUT SNAP IN SPIRE P0071/05/01/00
28	420133	COVER WIRING TOPDECK SD11
32	420833P	NOZZLE SPRAY FILL ASSY
	<i>Includes</i>	CAP NOZZLE SPRAY FILL
	<i>Includes</i>	NOZZLE SPRAY FILL
	<i>Includes</i>	PISTON NOZZLE SPRAY FILL
	<i>Includes</i>	SPRING FILL NOZZLE
33	425974	ELBOW NOZZLE SD3
34	426825P	HINGE LID SD11 (PKT 2)
37	611811P	SCREW ST 8X1/2 PAN PH PLASTITE SS (PKT 10)
38	420700P	LIDLOCK ASSEMBLY SD14
40	420738P	CLAMP HARNESS TOP DECK
41	420755	CORD SET SD US STRAIN RELIEF
42	479452P	KIT EPCOS THERMISTOR/GROMMET UL
	<i>Includes</i>	THERMISTOR ASSY EPCOS UL
	<i>Includes</i>	GROMMET 4MM THERMISTOR
	<i>Includes</i>	LEAFLET THERMISTOR EPCOS UL
43	479455P	KIT GROMMET THERMISTOR SS
	<i>Includes</i>	GROMMET THERMISTOR
	<i>Includes</i>	LEAFLET THERMISTOR EPCOS UL
44	478156	LABEL LID 120V AQS 3UD
	478155	LABEL LID 120V AQS 3UD FR

# WRAPPER CABINET

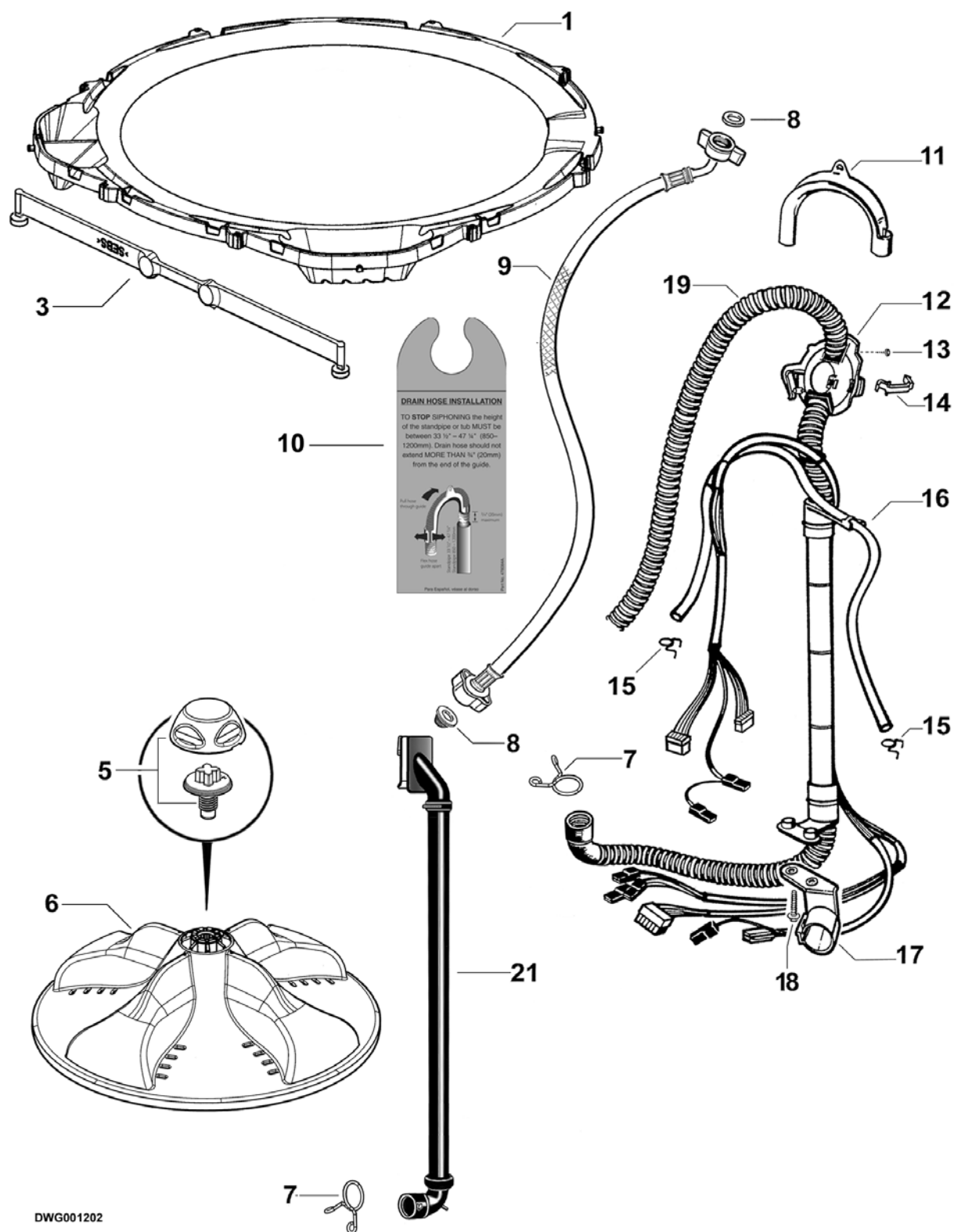


DWG001204

## WRAPPER CABINET

REF	PART	DESCRIPTION
1	478094	PACKER BOWL L AQUASMART
3	426058	COVER EARTH CLIP
4	478169P	WRAPPER CABINET ASSY LGE PKD
	<i>Includes</i>	<i>CORNER CABINET/ FOOT ASSY (4)</i>
5		PART OF CABINET ASSY
6	472969P	KIT FOOT & INSERT
	<i>Includes</i>	<i>FOOT LEVELLING</i>
	<i>Includes 479183</i>	<i>INSERT FOOT</i>
7	479183	INSERT FOOT (PKT 4)
9	478081	PACKER BOTTOM L VAC FORMED
10	479273	KIT CATCH LID
	<i>Includes</i>	<i>CATCH LID PARTIAL OPENING</i>
	<i>Includes</i>	<i>TAPE FOAM DIE CUT 46X40X1</i>
	<i>Includes</i>	<i>LEAFLET INSTALLATION CATCH LID</i>
11	479314	CARD WARRANTY REGISTRATION ALL PRODUCT
12	478153	BOOKLET USE & CARE AQS-2 120V LCD
39	478159	LEAFLET SERVICE SUMMARY AQS 2
40	478121	LEAFLET INSTALL INSTRUCTION AQS 2
NI	421065	LEAFLET GUIDE QUICK REFERENCE - USA
NI	478111	CARTON SMARTPAC L AQS US

# AGITATOR AND HOSES



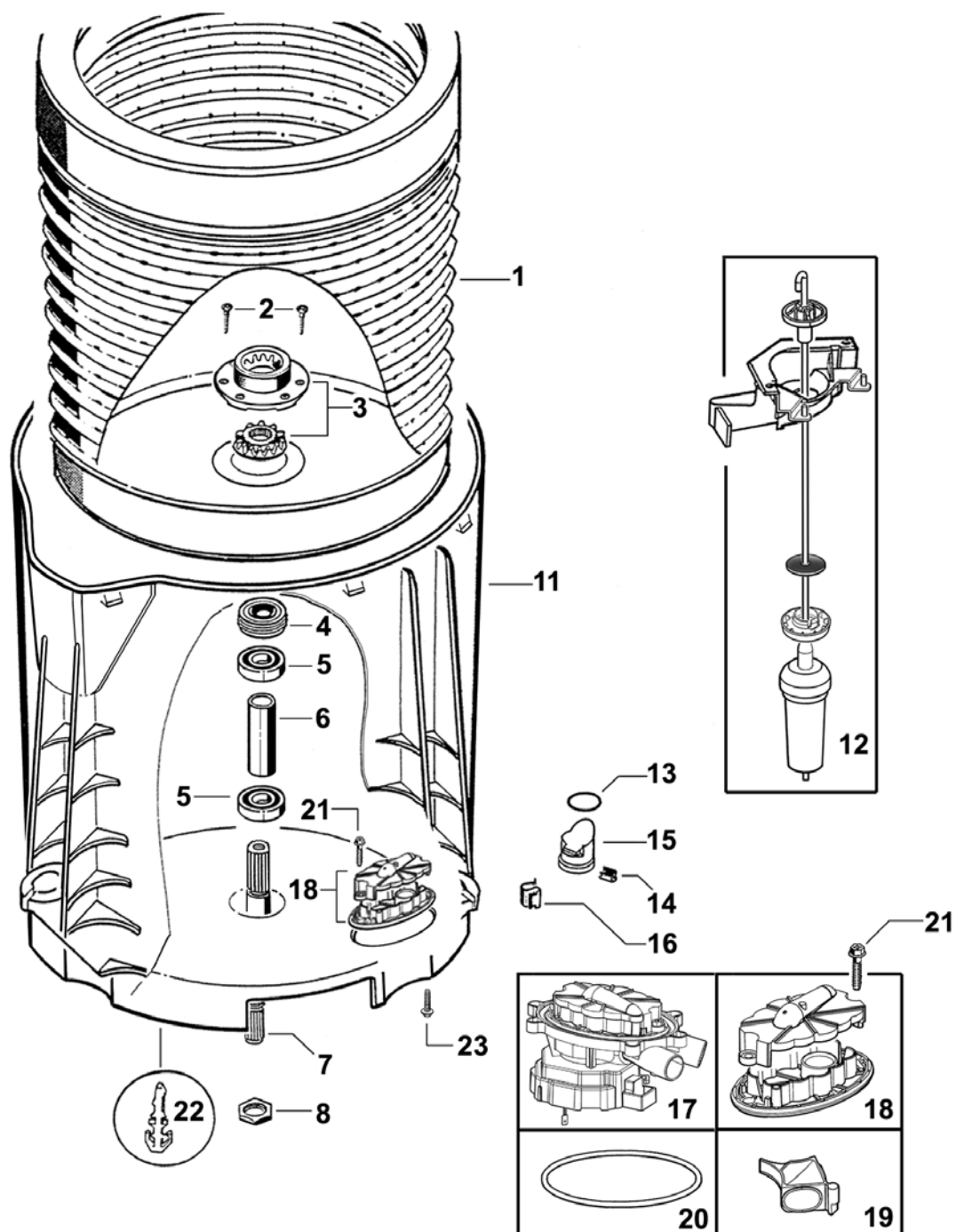
DWG001202

## AGITATOR AND HOSES

REF	PART	DESCRIPTION
1	421041	NECKRING KIT
	<i>Includes</i>	<i>NECKRING LGE DISPENSER MOULDED</i>
	<i>Includes 420978</i>	<i>STRAP MOULDED STRAIGHT (4)</i>
3	420978P	STRAP MOULDED STRAIGHT (PKT 4)
5	421040P	CAP & BOLT KIT PKD
	<i>Includes</i>	<i>CAP AGITATOR LP</i>
	<i>Includes</i>	<i>BOLT AGITATOR LP</i>
6	421039	AGITATOR LP KIT
	<i>Includes 421040</i>	<i>CAP AGITATOR LP &amp; BOLT AGITATOR LP</i>
7	420677	CLAMP HOSE DIA 33 SAFE
8	420016P	KIT FILTER / CONNECTOR SEAL (2 EACH)
	<i>Includes 420016</i>	<i>FILTER INLET MIFLEX (2)</i>
	<i>Includes 420017</i>	<i>CONNECTOR SEAL MIFLEX (2)</i>
9	420871	HOSE INLET US PLASTIC MIFLEX
	<i>Includes</i>	<i>FILTER INLET PLASTIC</i>
	<i>Includes</i>	<i>CONNECTOR SEAL(2)</i>
10	478084	TAG SIPHON DRAIN HOSE
11	422808P	GUIDE OUTLET HOSE
12	426455	FIXTURE DRAIN HOSE
13	611933P	SCREW ST 8X5/8 TA MTS PH H5 (PKT 10)
14	425487	CLIP FIXTURE DRAIN HOSE
15	425611	CLAMP HOSE 08.5 TALL GRIP
16	425299	TUBE PRESSURE SENSOR SD2
17	425503	BRACKET DRAIN HOSE
18	420748P	SCREW ST 1/4X1 PLASTITE 60 (PKT 10)
19	420676	HOSE & HARNESS ASSY SD14
	<i>Includes</i>	<i>HOSE DRAIN SD14</i>
	<i>Includes 420677</i>	<i>CLAMP HOSE DIA 33 SAFE</i>
	<i>Includes</i>	<i>HARNESS BOWL / TOP DECK</i>
	<i>Includes 425487</i>	<i>CLIP FIXTURE DRAIN HOSE</i>
	<i>Includes 425611</i>	<i>CLAMP HOSE 08.5 TALL GRIP</i>
	<i>Includes</i>	<i>STAP DRAIN HOSE ROUND</i>
21	420514	HOSE RECIRC ASSY SD14

# INNER & OUTER BOWLS AND DRAIN PUMP

Fisher's Paykel  
customer CARE

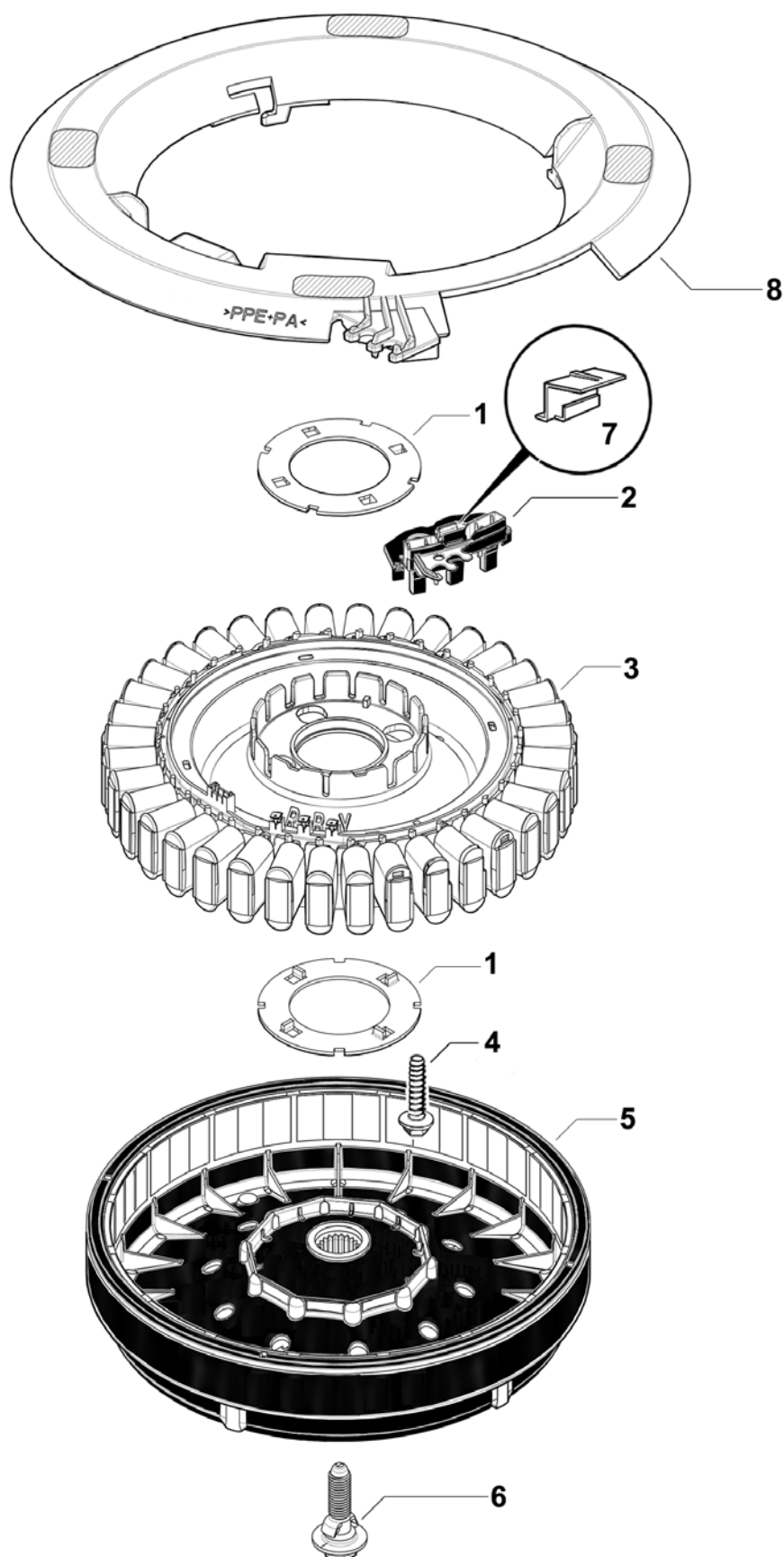


DWG001935

## INNER AND OUTER BOWLS AND PUMP

REF	PART	DESCRIPTION
1	478102P	BOWL INNER ASSY SD14L PKD
	<i>Includes</i>	<i>BOWL INNER ASSY LARGE</i>
	<i>Includes 425080</i>	<i>SPLINE DRIVEN</i>
	<i>Includes 425131</i>	<i>SCREW CLUTCH (3)</i>
	<i>Includes 425596</i>	<i>SPLINE DRIVE ASSY</i>
2	425131P	SCREW CLUTCH (PKT 10)
3	479318	KIT SPLINE DRIVE
	<i>Includes 425080</i>	<i>SPLINE DRIVEN</i>
	<i>Includes 425596</i>	<i>SPLINE DRIVE ASSY</i>
4	425009P	LIPSEAL PKD
5	425006P	BEARING 6005 2RSH/C3 PKD
6	425007	SPACER BEARING
7	420794P	SHAFT DRIVE INTERNAL THREAD KIT
	<i>Includes 420664</i>	<i>BOLT ROTOR</i>
	<i>Includes 420665</i>	<i>BOLT AGITATOR (Not Required or Used for this Model)</i>
8	425171	NUT BEARING
11	478095	OUTER BOWL ASSY AQUASMART
	<i>Includes</i>	<i>BOWL OUTER L SUB ASSY AQS</i>
	<i>Includes 472867</i>	<i>CLIP WIRING OUTER BOWL (3)</i>
	<i>Includes 613709</i>	<i>CLIP PIPE UNITED CARR FT19280-ZNPL</i>
	<i>Includes 425763</i>	<i>PLUG ASSEMBLY PRESSURE CHAMBER</i>
	<i>Includes 613710</i>	<i>CLIP EDGE (2)</i>
	<i>Includes 425006</i>	<i>BEARING 6005 2RSH/C3 (2)</i>
	<i>Includes 425007</i>	<i>SPACER BEARING</i>
	<i>Includes 425009</i>	<i>LIPSEAL</i>
12	421127P	SUSPENSION KIT AQUASMART (PKT 4)
13	425149	SEAL O RING PRESSURE CHAMBER
14	613710	CLIP EDGE
15	425763	PLUG ASSY PRESSURE CHAMBER
	<i>Includes 425097</i>	<i>PLUG PRESSURE CHAMBER</i>
	<i>Includes 425149</i>	<i>SEAL O RING PRESSURE CHAMBER</i>
16	613709	CLIP PIPE UNITED CARR FT19280-ZNPL
17	479417	PUMP (SMART PUMP) ASSEMBLY KIT
	<i>Includes 421124P</i>	<i>SEAL PUMP D PROFILE</i>
	<i>Includes 421030</i>	<i>COVER CONNECTOR PUMP</i>
18	479418	HOOD AND CAP (SMART PUMP) KIT
19	420403	VALVE FLAPPER (SMART PUMP)
20	479420	SEAL (SMART PUMP) HOUSING PKD
	<i>Includes 421124P</i>	<i>SEAL PUMP D PROFILE</i>
21	425162P	SCREW COVER (PKT 10)
22	472867	CLIP WIRING OUTER BOWL
23	425150P	SCREW 1/4X1 PLASTITE 60 (PKT 10)

# MOTOR



DWG001621



## MOTOR

REF	PART	DESCRIPTION
1	426174P	CLAMP PLATE STATOR LANCED (PAIR)
2	438515P	MODULE SD RPS 36H SPARES
	<i>Includes 420773</i>	<i>COVER TERMINAL RAST</i>
	<i>Includes 420773</i>	<i>COVER TERMINAL RAST</i>
3	438516P	STATOR ASSEMBLY SPARES
	<i>Includes</i>	<i>STATOR ASSY 0.6 AL</i>
4	426835P	SCREW STATOR (PKT 10)
5	438503P	ROTOR ASSEMBLY SPARES
	<i>Includes 420664</i>	<i>BOLT ROTOR</i>
6	420664P	BOLT ROTOR
7	420773	COVER TERMINAL RAST
8	421094	SHIELD MOTOR UL